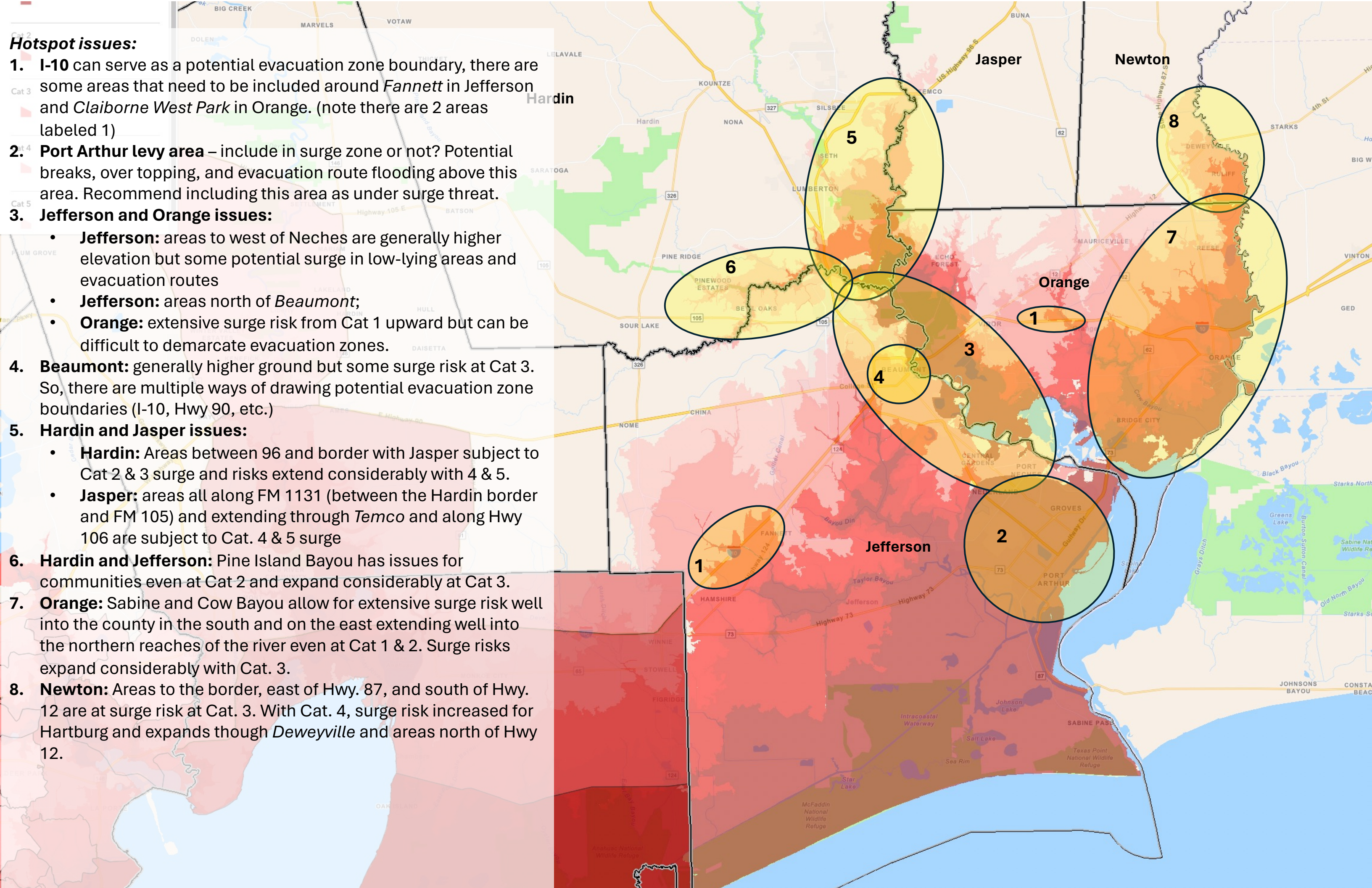


- Cat 2
- Cat 3
- Cat 4
- Cat 5

General overview

Surge risks to consider:

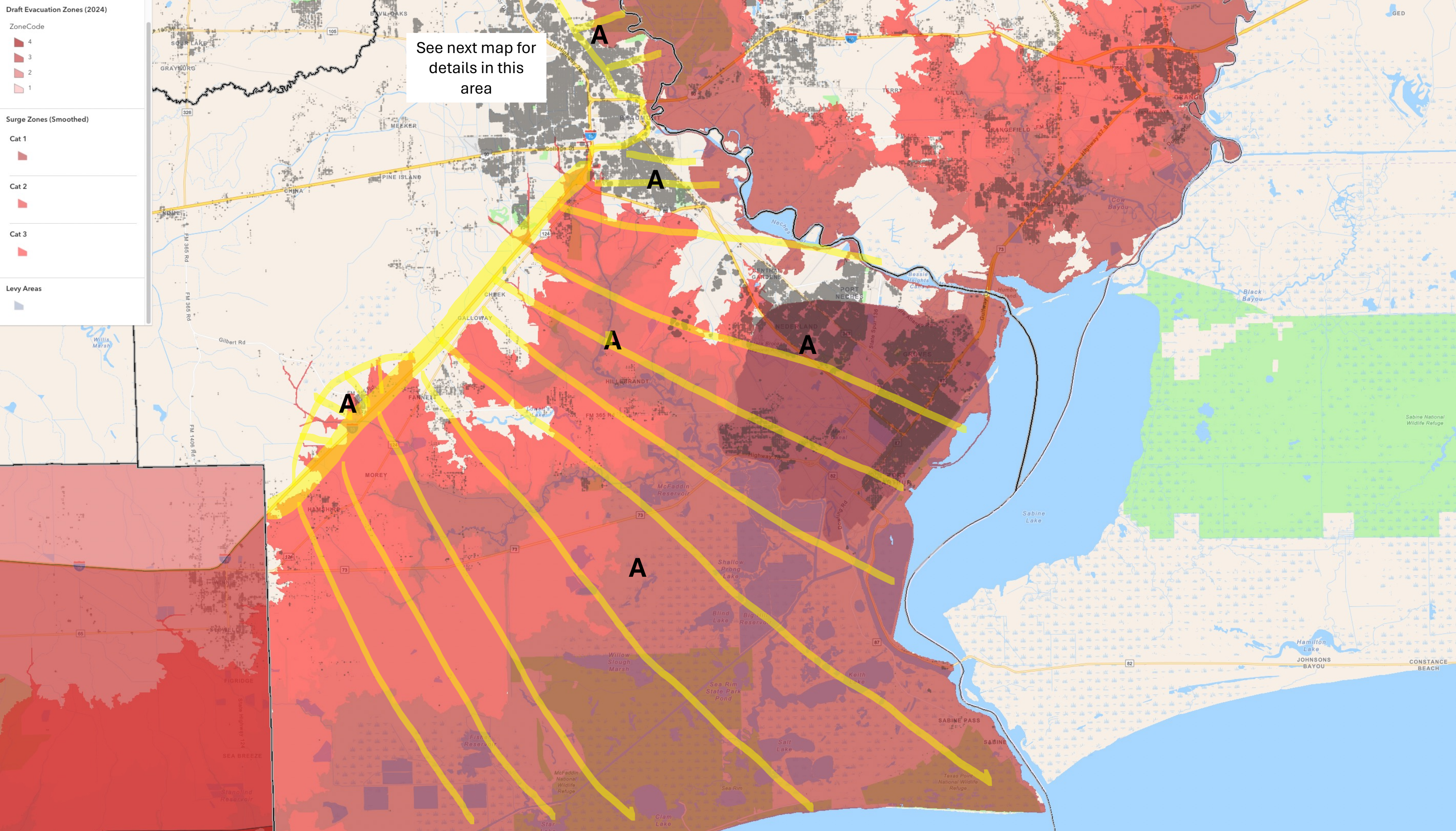
- General surge risk due to general low topography of Jefferson and Orange
- Surge extensions due to:
 - Neches River, Pine Island Bayou, and associated wetlands
 - Sabine River, Cow Bayou, and associated wetlands
- These extend surge risk into Hardin, Newton, and Jasper
- Pay particular attention to evacuation routes potentially impacted



Hotspot issues:

- 1. I-10** can serve as a potential evacuation zone boundary, there are some areas that need to be included around *Fannett* in Jefferson and *Claiborne West Park* in Orange. (note there are 2 areas labeled 1)
- 2. Port Arthur levy area** – include in surge zone or not? Potential breaks, over topping, and evacuation route flooding above this area. Recommend including this area as under surge threat.
- 3. Jefferson and Orange issues:**
 - Jefferson:** areas to west of Neches are generally higher elevation but some potential surge in low-lying areas and evacuation routes
 - Jefferson:** areas north of *Beaumont*;
 - Orange:** extensive surge risk from Cat 1 upward but can be difficult to demarcate evacuation zones.
- 4. Beaumont:** generally higher ground but some surge risk at Cat 3. So, there are multiple ways of drawing potential evacuation zone boundaries (I-10, Hwy 90, etc.)
- 5. Hardin and Jasper issues:**
 - Hardin:** Areas between 96 and border with Jasper subject to Cat 2 & 3 surge and risks extend considerably with 4 & 5.
 - Jasper:** areas all along FM 1131 (between the Hardin border and FM 105) and extending through *Temco* and along Hwy 106 are subject to Cat. 4 & 5 surge
- 6. Hardin and Jefferson:** Pine Island Bayou has issues for communities even at Cat 2 and expand considerably at Cat 3.
- 7. Orange:** Sabine and Cow Bayou allow for extensive surge risk well into the county in the south and on the east extending well into the northern reaches of the river even at Cat 1 & 2. Surge risks expand considerably with Cat. 3.
- 8. Newton:** Areas to the border, east of Hwy. 87, and south of Hwy. 12 are at surge risk at Cat. 3. With Cat. 4, surge risk increased for Hartburg and expands though *Deweyville* and areas north of Hwy 12.

Jefferson County Cat 1-3 surge



Jefferson County
Cat. 1-3 precise surge

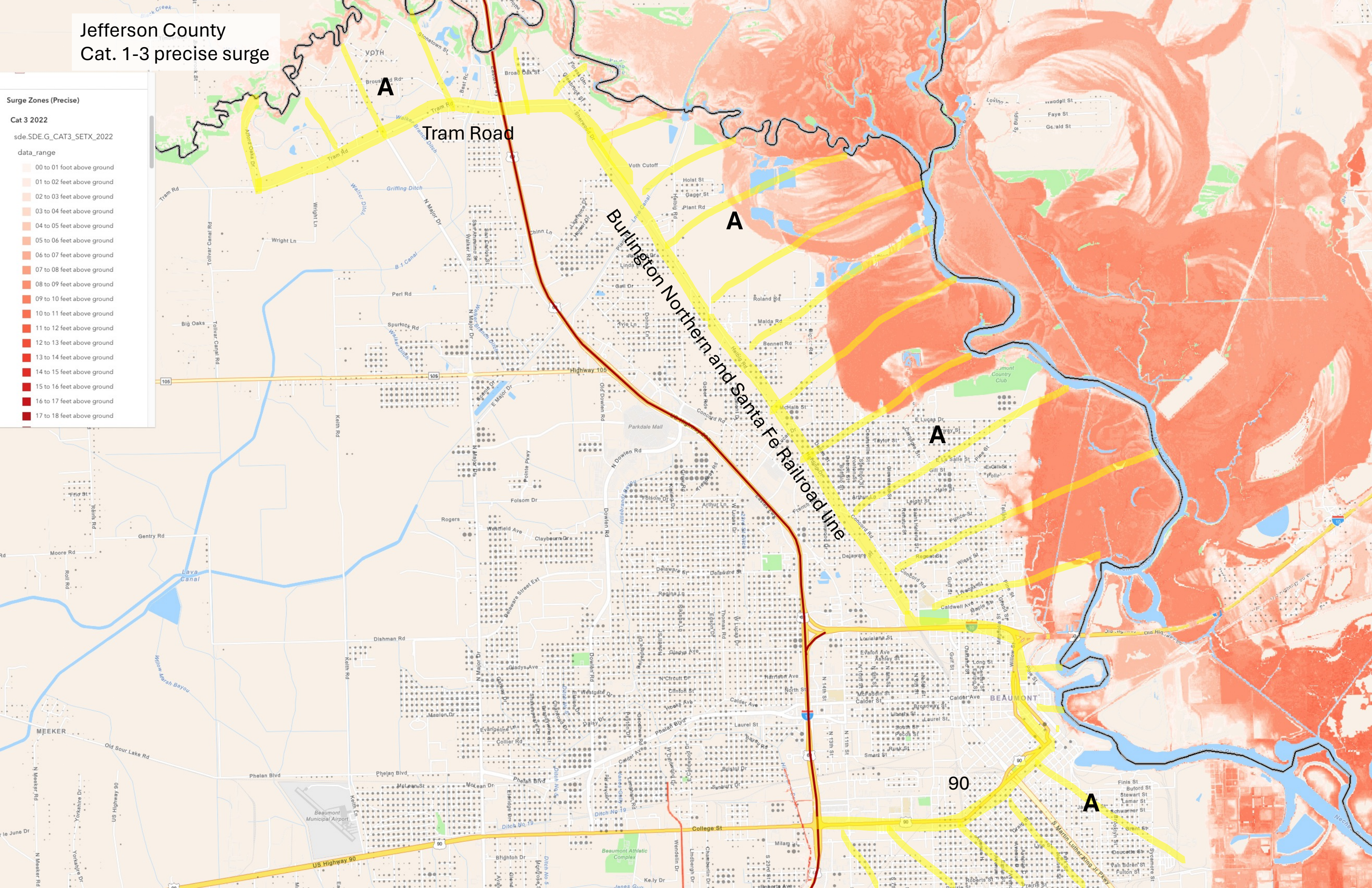
Surge Zones (Precise)

Cat 3 2022

sde.SDE.G_CAT3_SETX_2022

data_range

| |
|----------------------------|
| 00 to 01 foot above ground |
| 01 to 02 feet above ground |
| 02 to 03 feet above ground |
| 03 to 04 feet above ground |
| 04 to 05 feet above ground |
| 05 to 06 feet above ground |
| 06 to 07 feet above ground |
| 07 to 08 feet above ground |
| 08 to 09 feet above ground |
| 09 to 10 feet above ground |
| 10 to 11 feet above ground |
| 11 to 12 feet above ground |
| 12 to 13 feet above ground |
| 13 to 14 feet above ground |
| 14 to 15 feet above ground |
| 15 to 16 feet above ground |
| 16 to 17 feet above ground |
| 17 to 18 feet above ground |



Jefferson County Cat 1-5 surge

> (Zip-Zones)

> Population Characteristics

> Surge Zones (Smoothed)

> Surge Zones (Precise)

Worker Workplaces (2021)

Worker Residences (2021)

Population Count (2021)

Cat 1

Cat 2

Cat 3

Cat 4

Cat 5

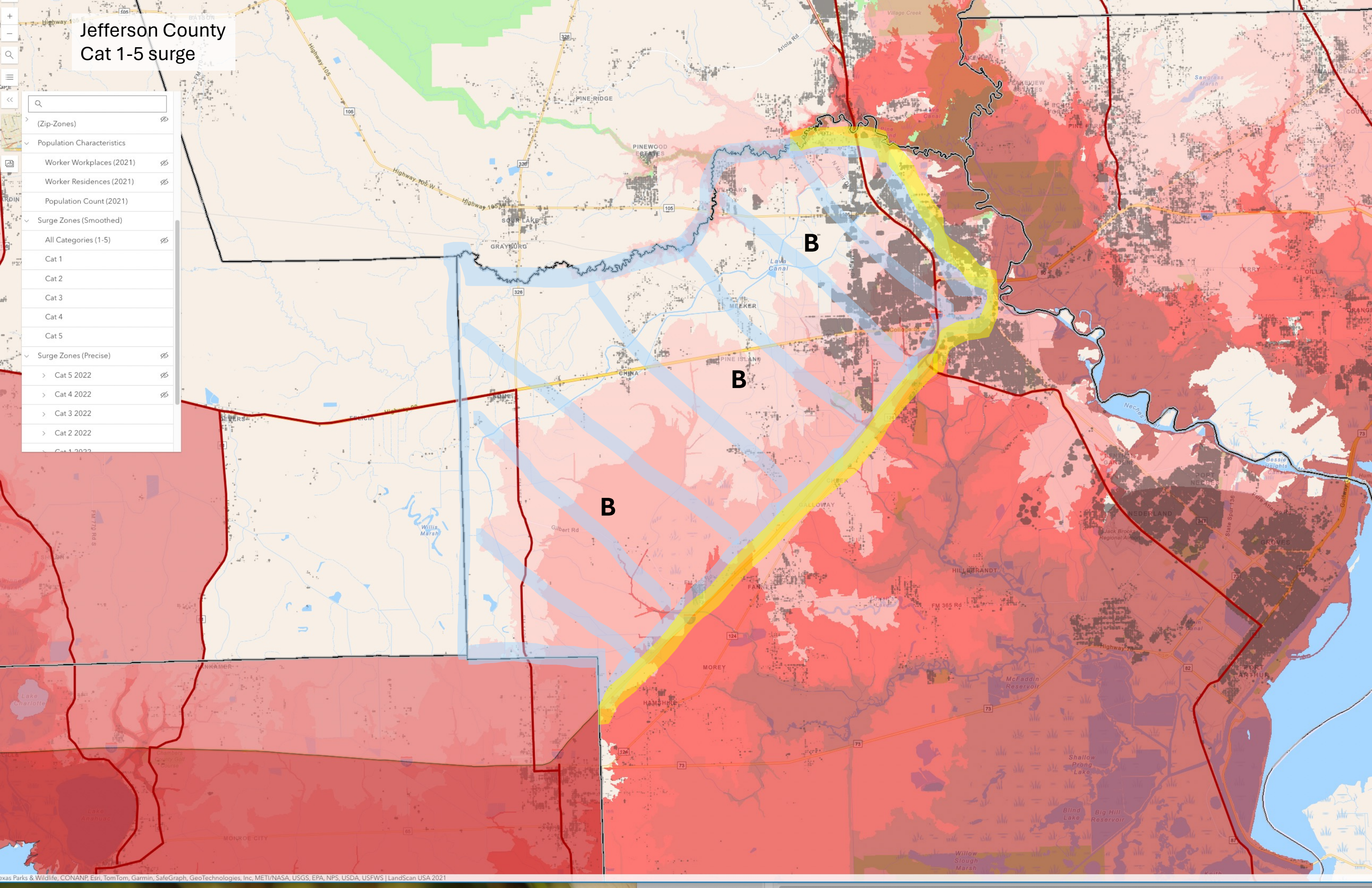
Cat 5 2022

Cat 4 2022

Cat 3 2022

Cat 2 2022

Cat 1 2022



Orange County
Cat 1-3 surge

Boundaries

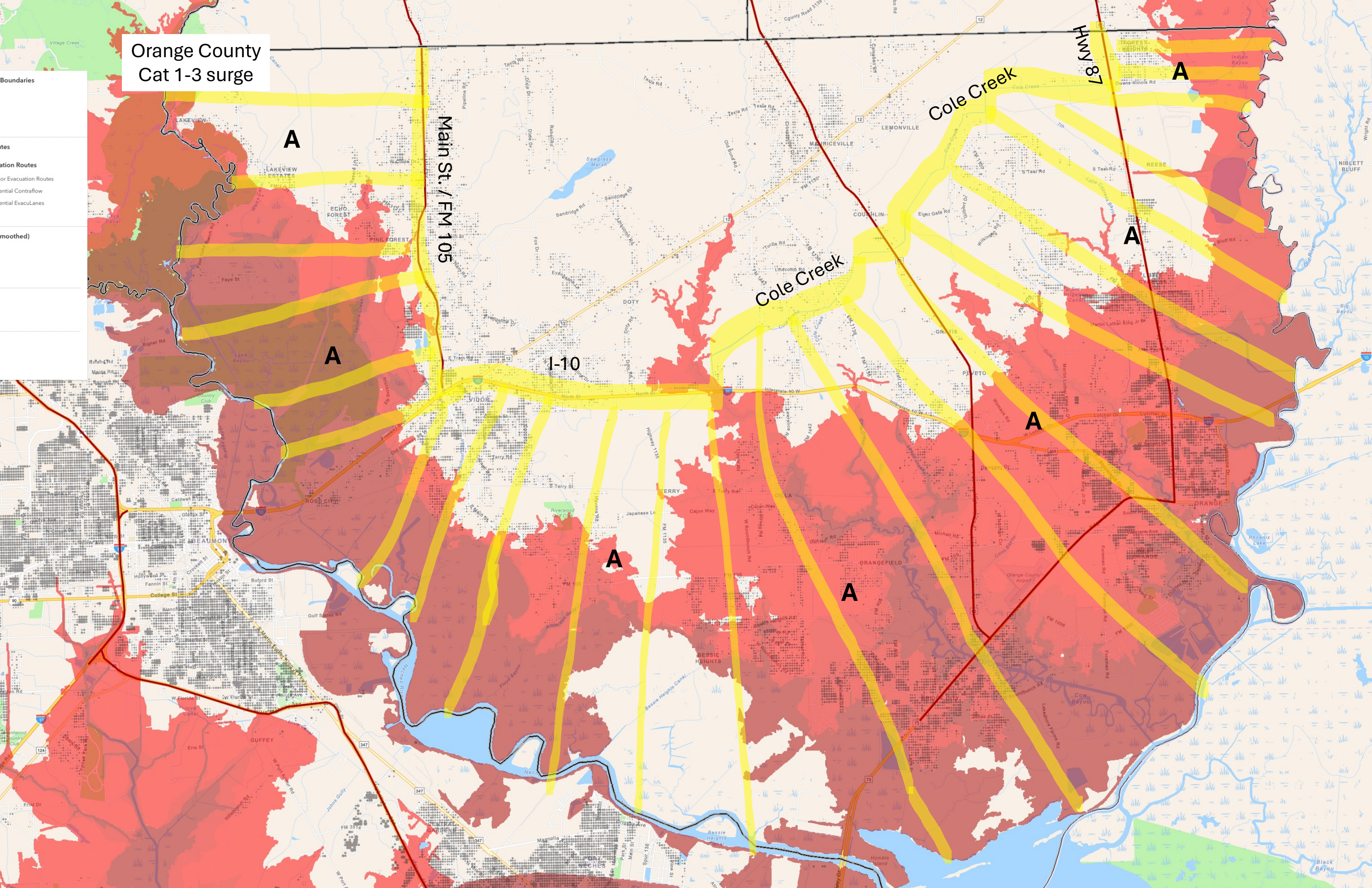
Routes

Evacuation Routes

Potential Contraflow

Potential Evacuation Lanes

(Smoothed)



Orange County
Cat 1-5 surge

Legend:

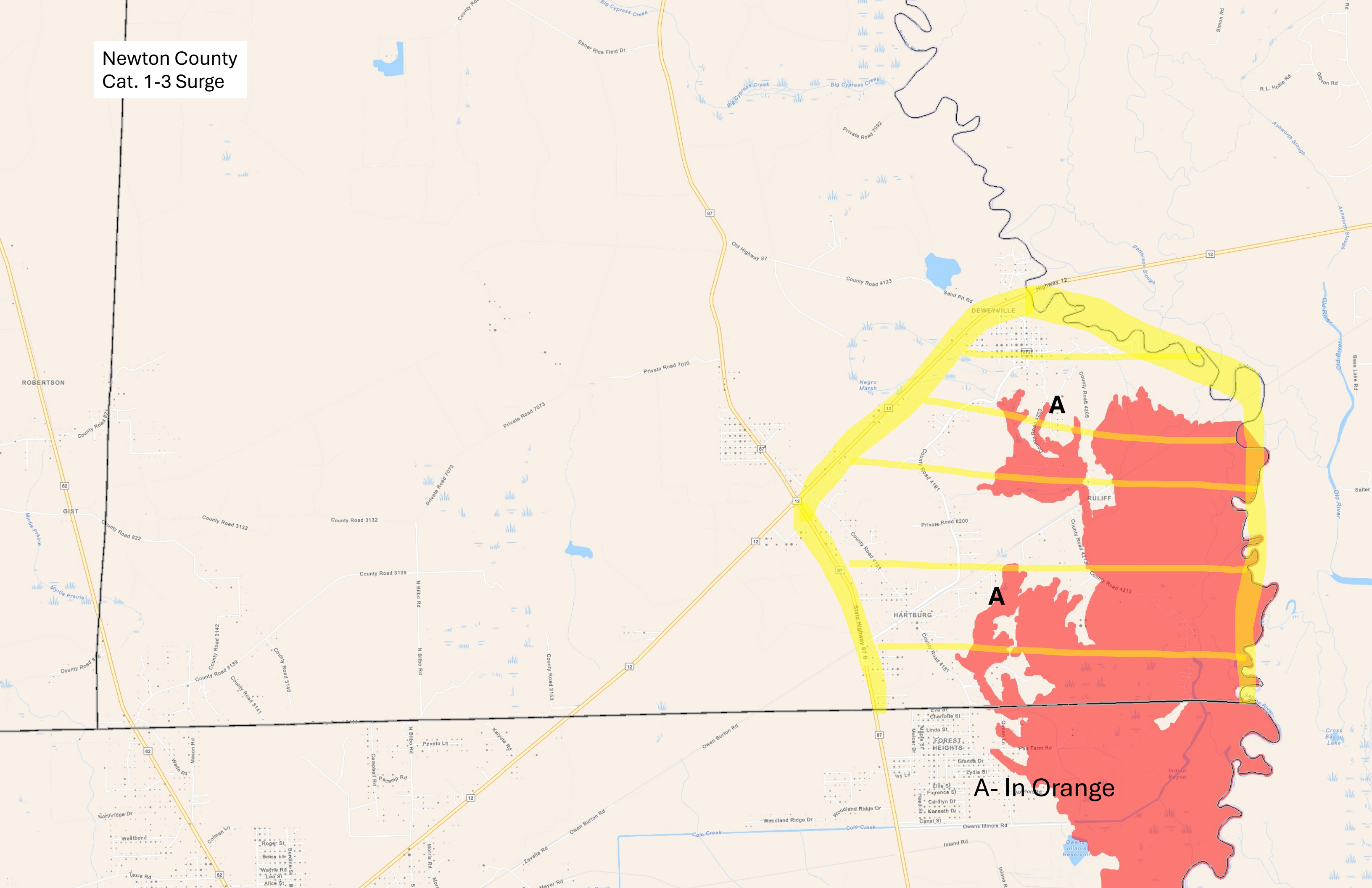
- Independent Jurisdictions
- Commuting Zones
- Evacuation Routes
- Draft Evacuation Zones (2024)
- 2023 HGAC Evacuation Zones (Zip-Zones)
- Population Characteristics
- Worker Workplaces (2021)
- Worker Residences (2021)
- Population Count (2021)
- Surge Zones (Smoothed)
- All Categories (1-5)
- Cat 1
- Cat 2
- Cat 3
- Cat 4
- Cat 5
- Surge Zones (Precise)

Orange County
Cat 1-5 surge

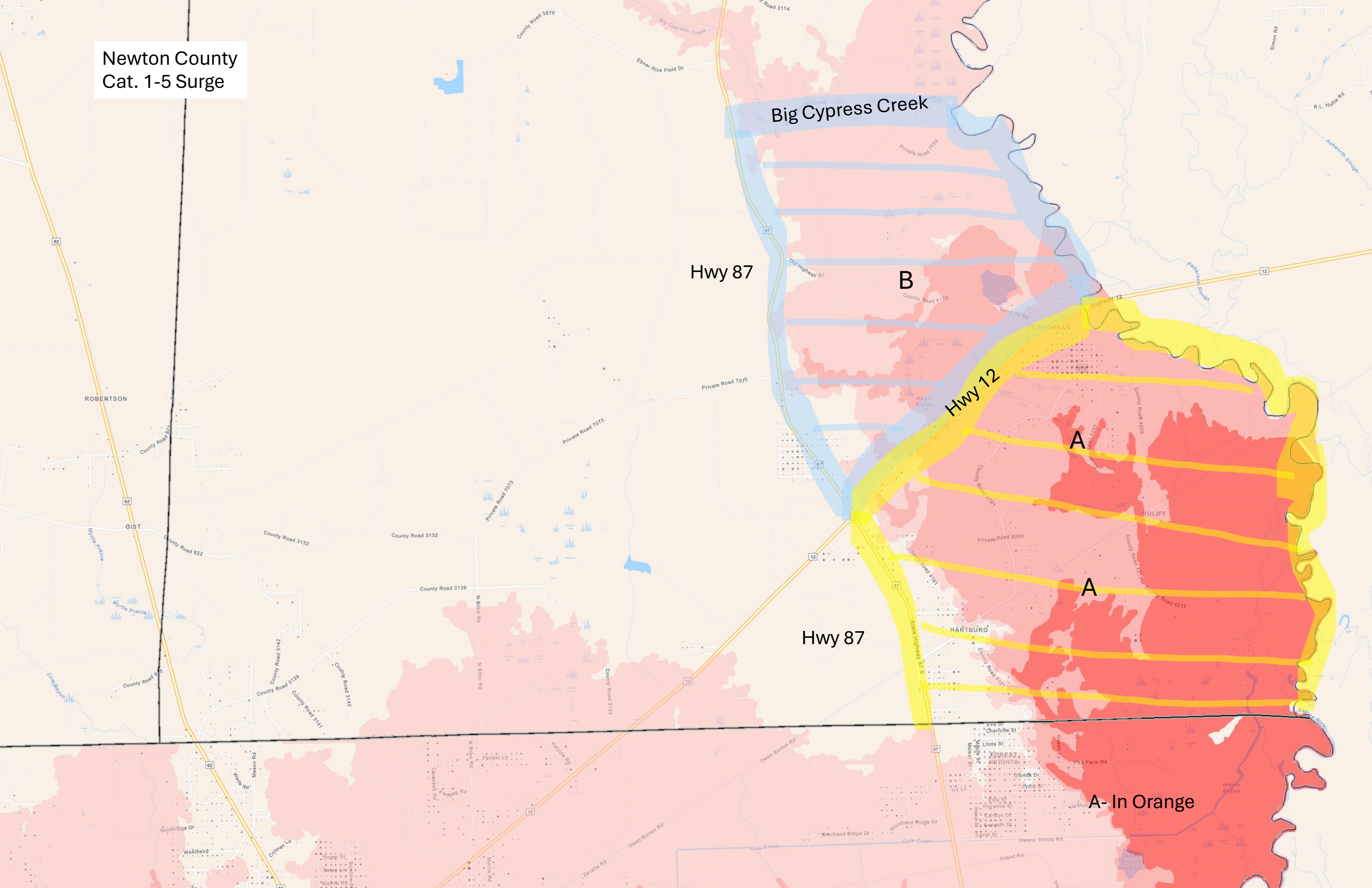
Legend:

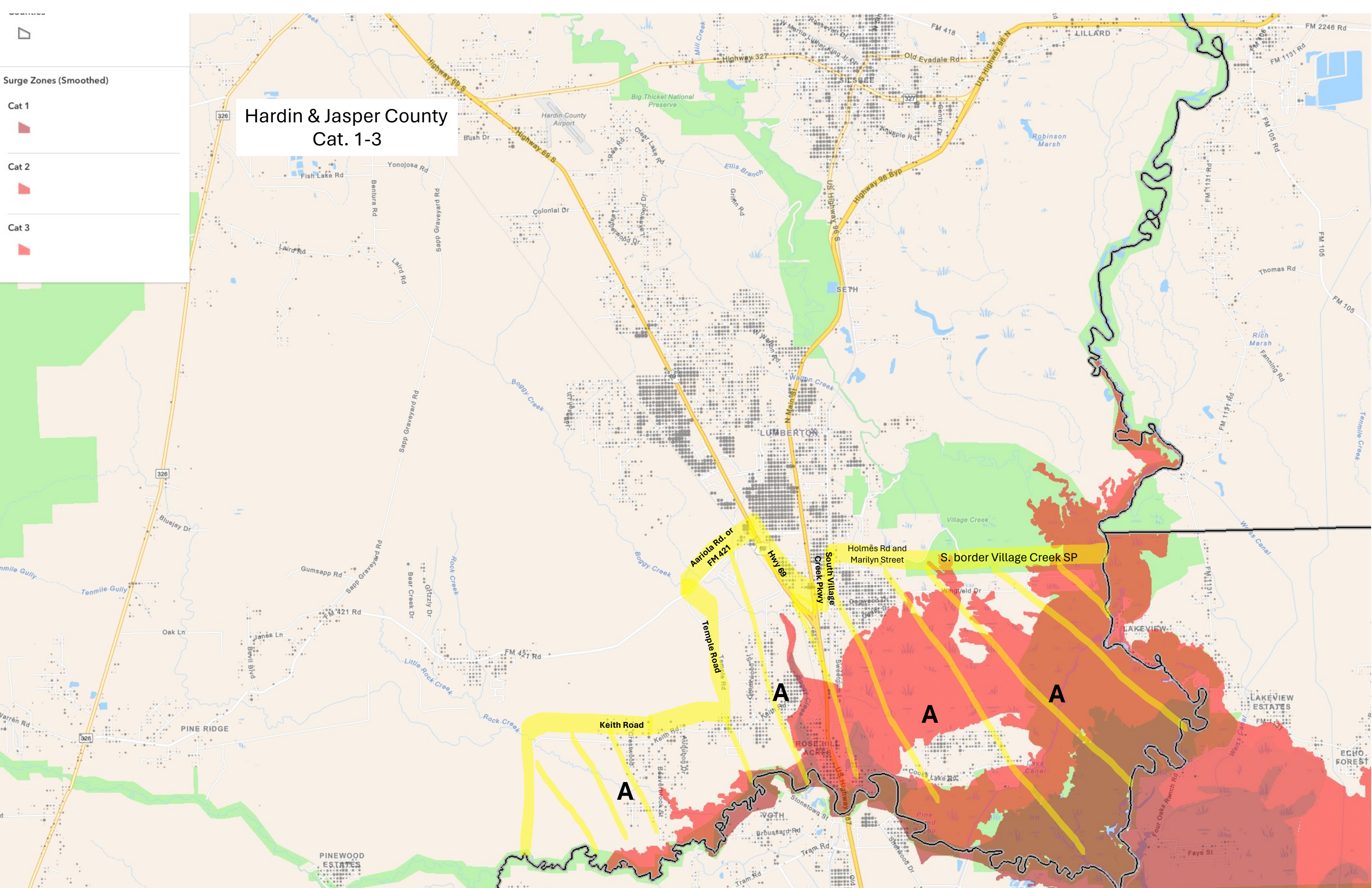
- Independent Jurisdictions
- Commuting Zones
- Evacuation Routes
- Draft Evacuation Zones (2024)
- 2023 HGAC Evacuation Zones (Zip-Zones)
- Population Characteristics
- Worker Workplaces (2021)
- Worker Residences (2021)
- Population Count (2021)
- Surge Zones (Smoothed)
- All Categories (1-5)
- Cat 1
- Cat 2
- Cat 3
- Cat 4
- Cat 5
- Surge Zones (Precise)

Newton County
Cat. 1-3 Surge



Newton County
Cat. 1-5 Surge





Administrative Boundaries

Counties



Surge Zones (Smoothed)

Cat 1



Cat 2



Cat 3



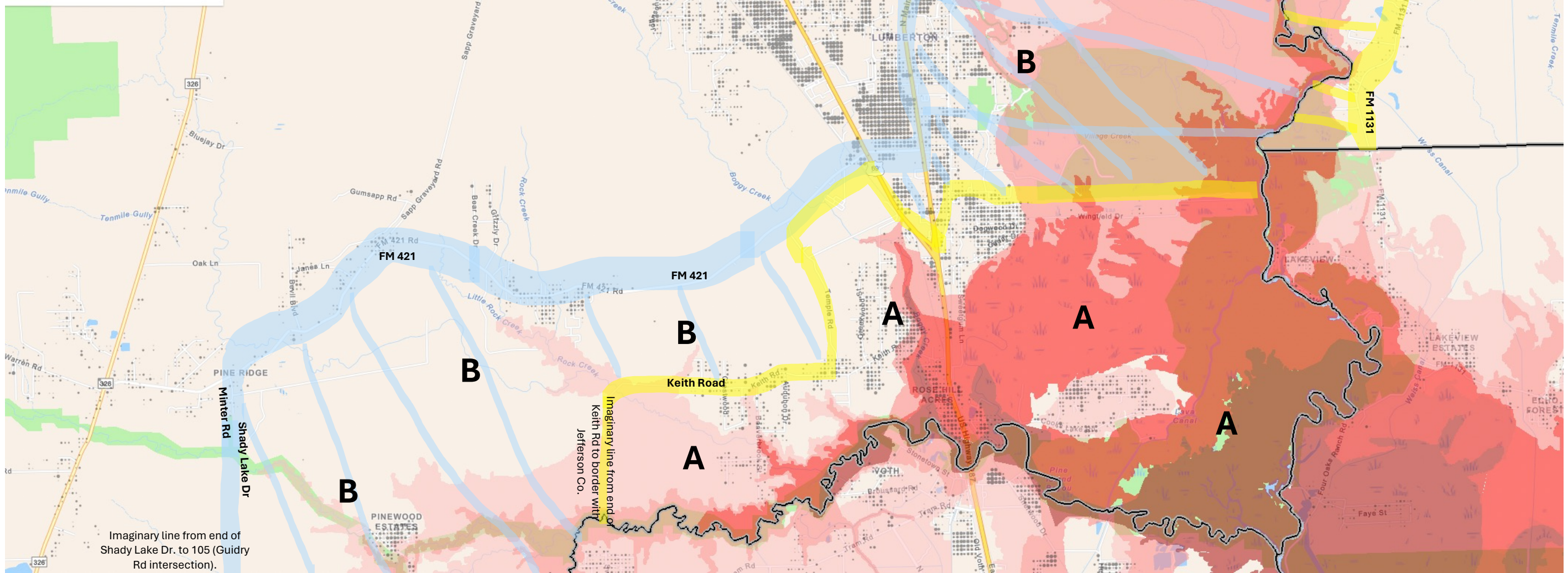
Cat 4



Cat 5



Hardin & Jasper County Cat. 1-5



Hardin County
Cat. 1-5

Administrative Boundaries

Smoothed Zones

Imaginary line from end of Shady Lake Dr. to 105 (Gudry Rd intersection).

Imaginary line from end of Keith Rd to border with Jefferson Co.

Map labels include: PINE RIDGE, PINEWOOD ESTATES, BEVIL OAKS, SQUIR LAKE, GRAYBURG, WESTBURY, and various roads like FM 421 Rd, Highway 105, Highway 326, and local streets like Shady Lake Dr, Minter Rd, and Bonura Rd.

ties

2