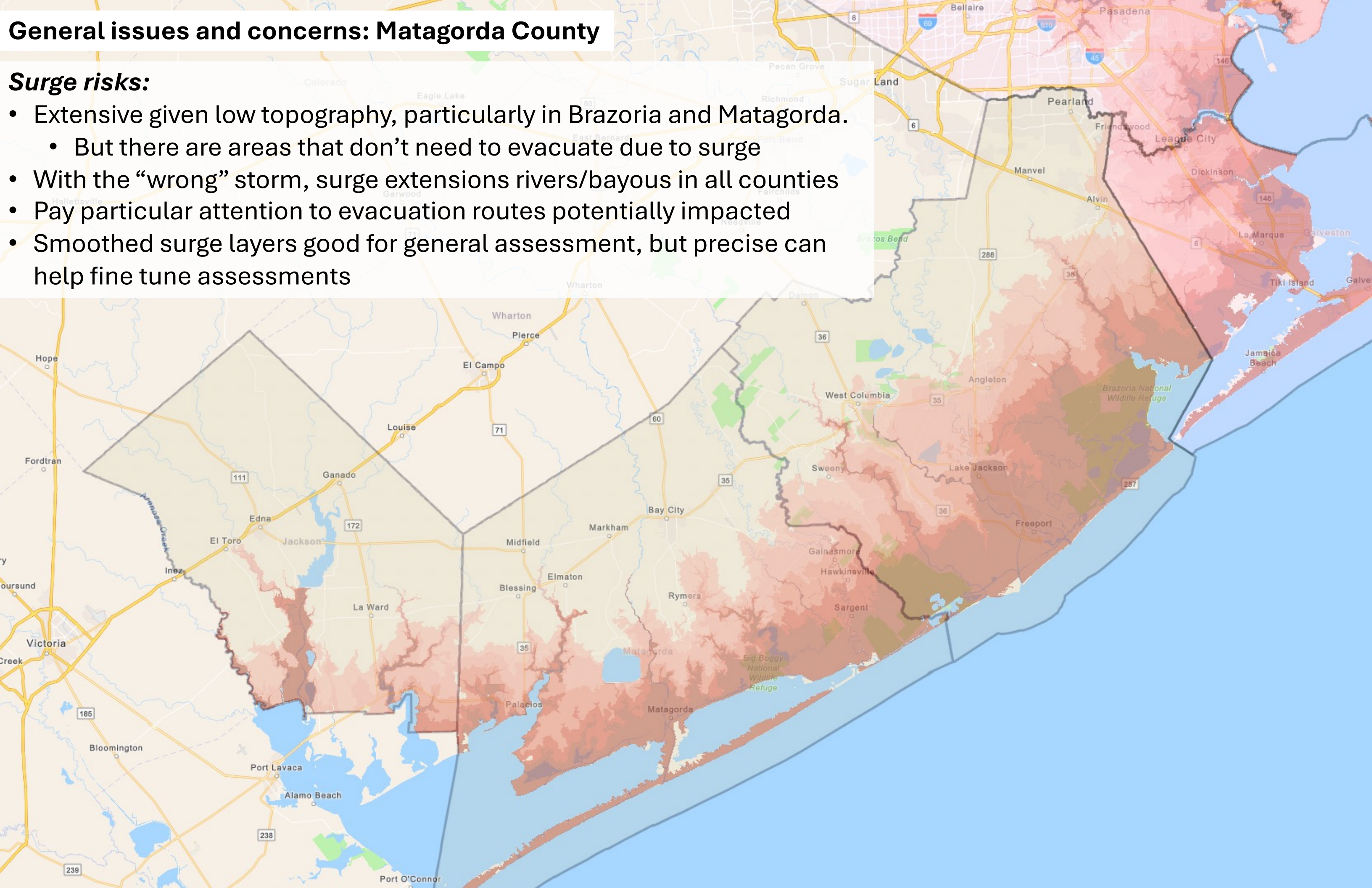


## General issues and concerns: Matagorda County

### *Surge risks:*

- Extensive given low topography, particularly in Brazoria and Matagorda.
  - But there are areas that don't need to evacuate due to surge
- With the “wrong” storm, surge extensions rivers/bayous in all counties
- Pay particular attention to evacuation routes potentially impacted
- Smoothed surge layers good for general assessment, but precise can help fine tune assessments





# Matagorda County Assessment

Counties



## Evacuation Routes

### TXDOT Evacuation Routes

- Major Evacuation Routes
- Potential Contraflow
- Potential EvacuLanes

## Surge Zones (Smoothed)

### All Categories (1-5)

CAT

- 5
- 4
- 3
- 2
- 1

Cat 1

### Issues to potentially consider:

- Coastal, B and C Zones.** Is an A Zone needed or does Coastal serve as an appropriately named “A” zone.
- Zip-code area changes:**
  - Much more significant changes throughout the county
  - But it appears that roadways were primary divisions for many zones.
- Bay City cutout is problematic** given zip changes, needs to be modified
- Area around Ashby and north of Camp Hulen:** surge risk even with only a Cat 1 at risk,

The following maps are just starting points for discussion and consideration.



# Matagorda County Assessment

Administrative Boundaries

Zip Code Tabulation Areas (2022)

Counties

Evacuation Routes

TXDOT Evacuation Routes

Major Evacuation Routes

Potential Contraflow

Potential EvacuLanes

2023 HGAC Evacuation Zones (Zip-Zones)

Zip-Zones (Bdy)

Coastal Zone (Bdy)

Zone A (Bdy)

Zip code changes throughout the county:

- dark blue, fine lines are new zip code tabulation areas.
- Purple, light blue and bright green demarcate old zip-codes and Coastal (purple), Zone B (green) and C (lighter blue)
- Many, many changes throughout the county, however, many zones conform to highways and roadways.
- Problematic for Bay City cutout, not sure it needs to be in Zone C as well



Zone C (Bdy)



Surge Zones (Smoothed)

Cat 1



Cat 2



Cat 3



Cat 4

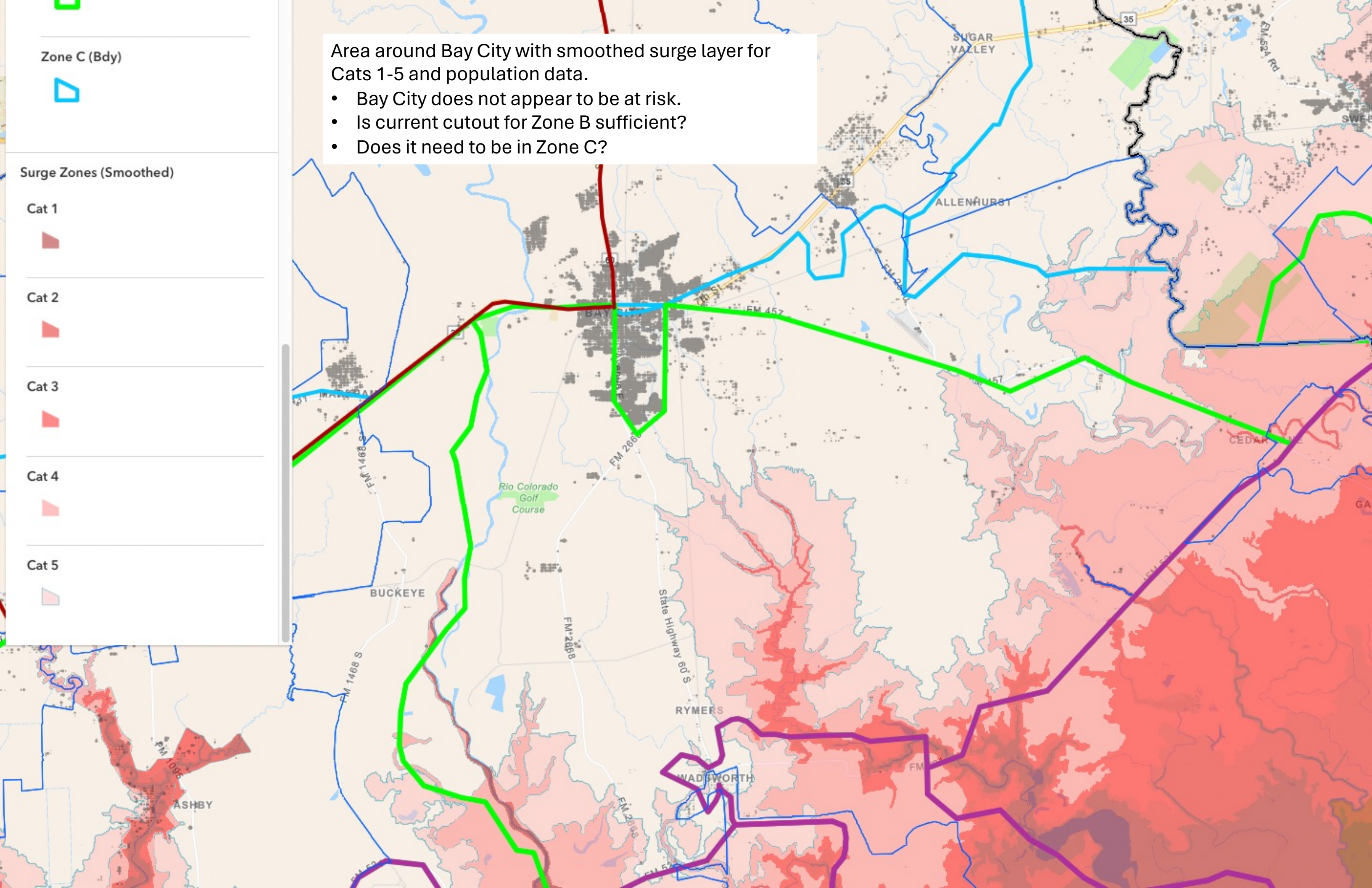


Cat 5



Area around Bay City with smoothed surge layer for  
Cats 1-5 and population data.

- Bay City does not appear to be at risk.
- Is current cutout for Zone B sufficient?
- Does it need to be in Zone C?





2023 HGAC Evacuation Zones (Zip-Zones)

Zip-Zones (Bdy)

Coastal Zone (Bdy)



Zone A (Bdy)



Zone B (Bdy)



Zone C (Bdy)



Surge Zones (Smoothed)

Cat 1

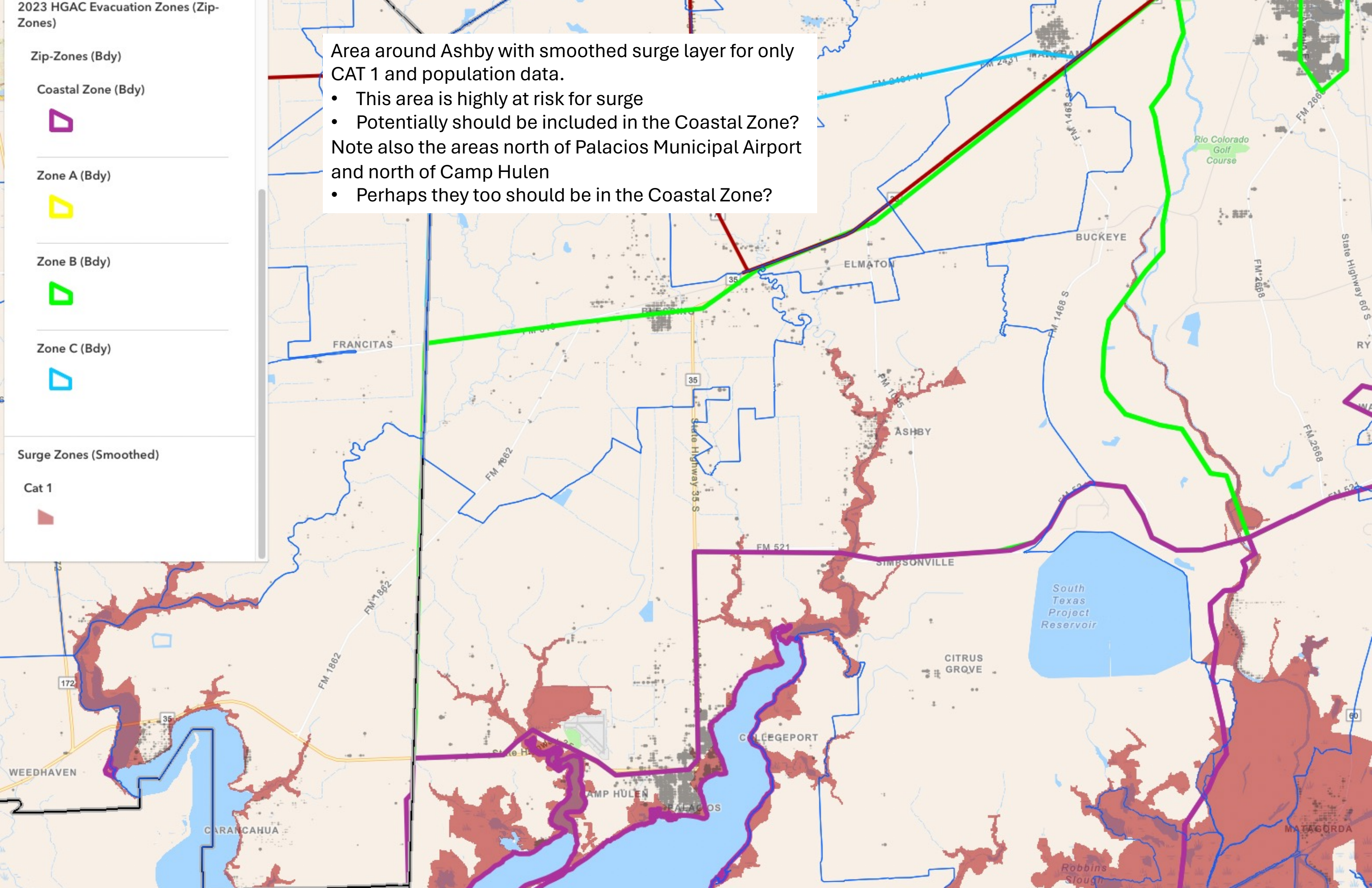


Area around Ashby with smoothed surge layer for only CAT 1 and population data.

- This area is highly at risk for surge
- Potentially should be included in the Coastal Zone?

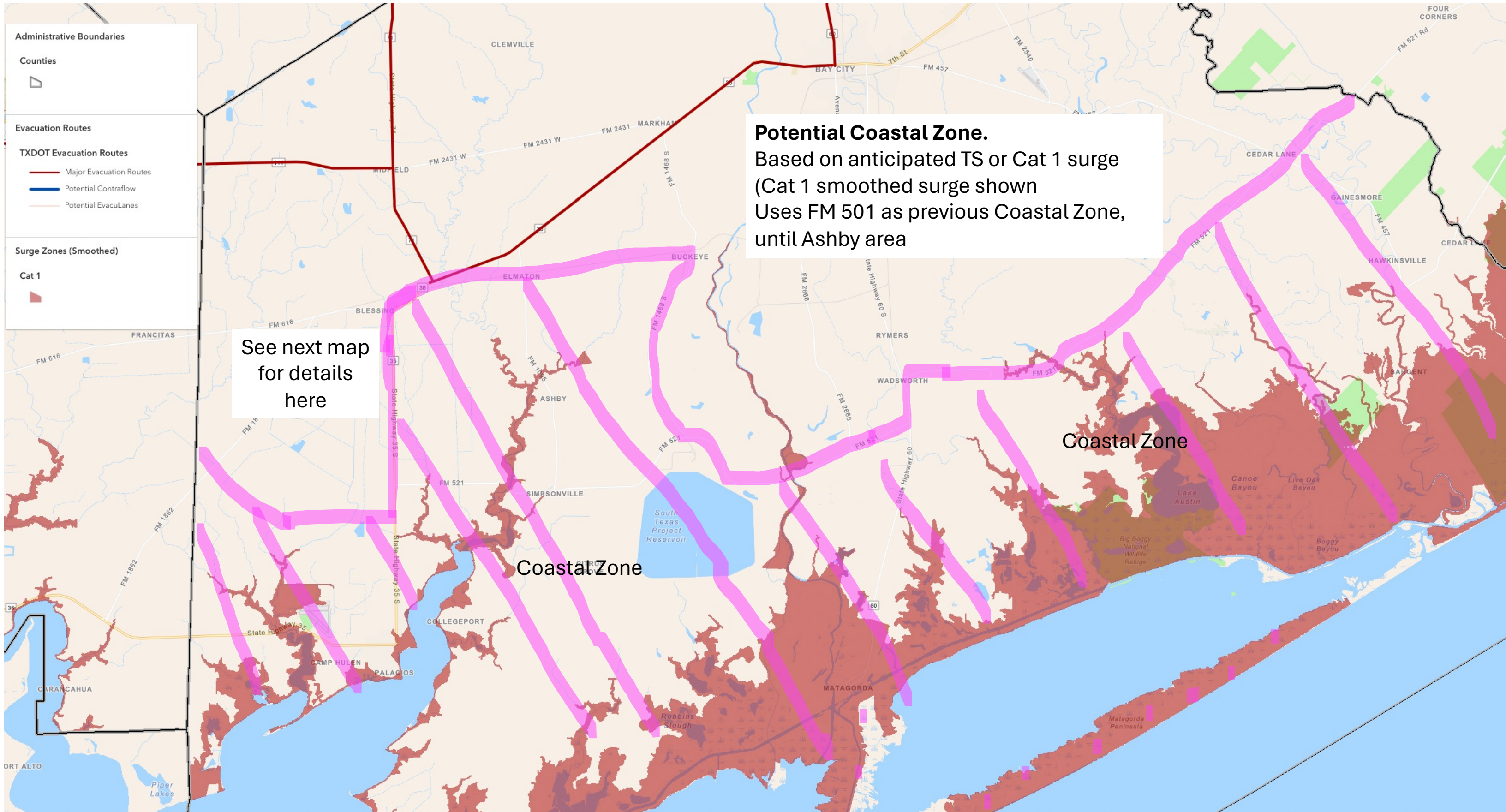
Note also the areas north of Palacios Municipal Airport and north of Camp Hulen

- Perhaps they too should be in the Coastal Zone?



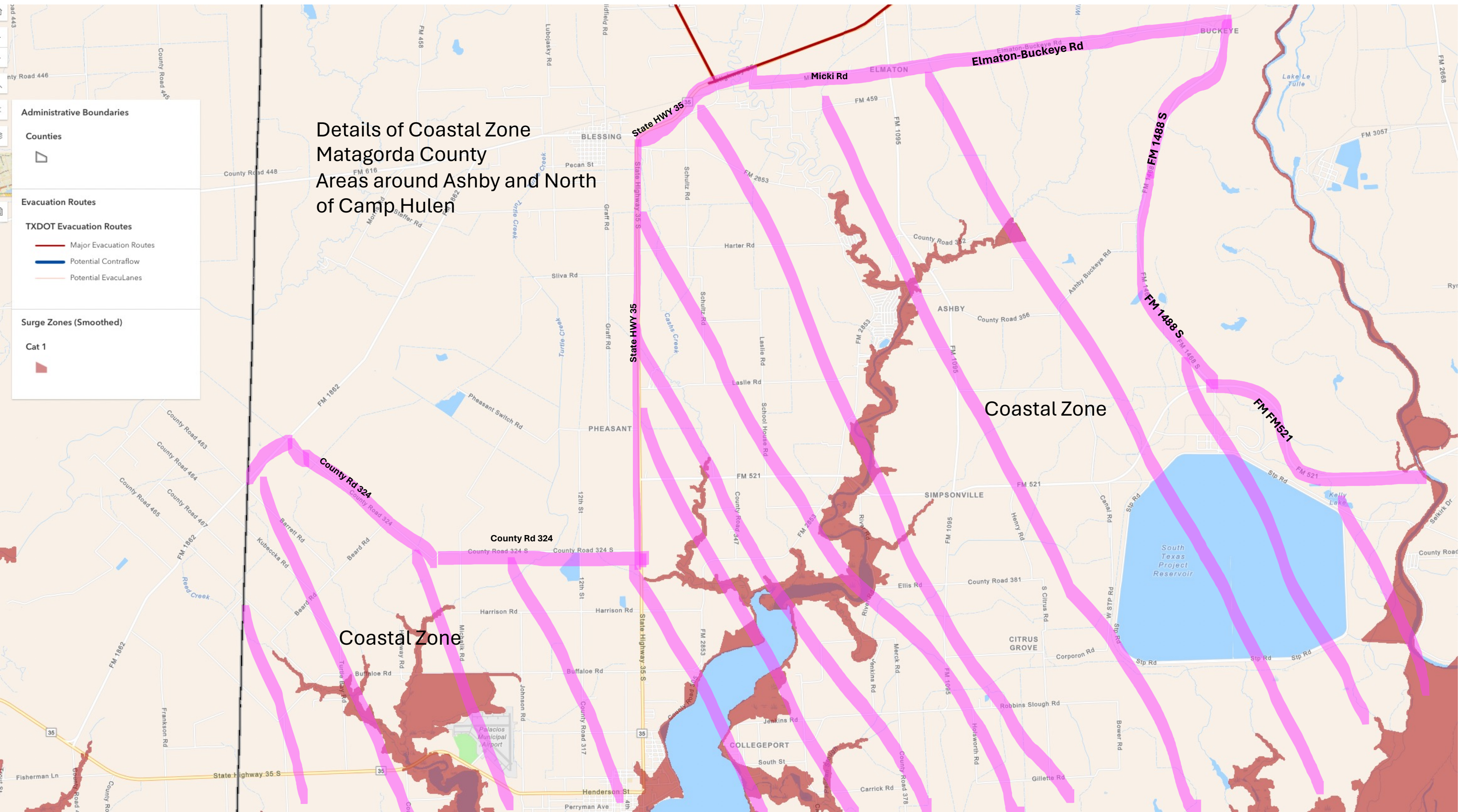


Potential modified Evacuation zones.  
These are just to get the conversations going.



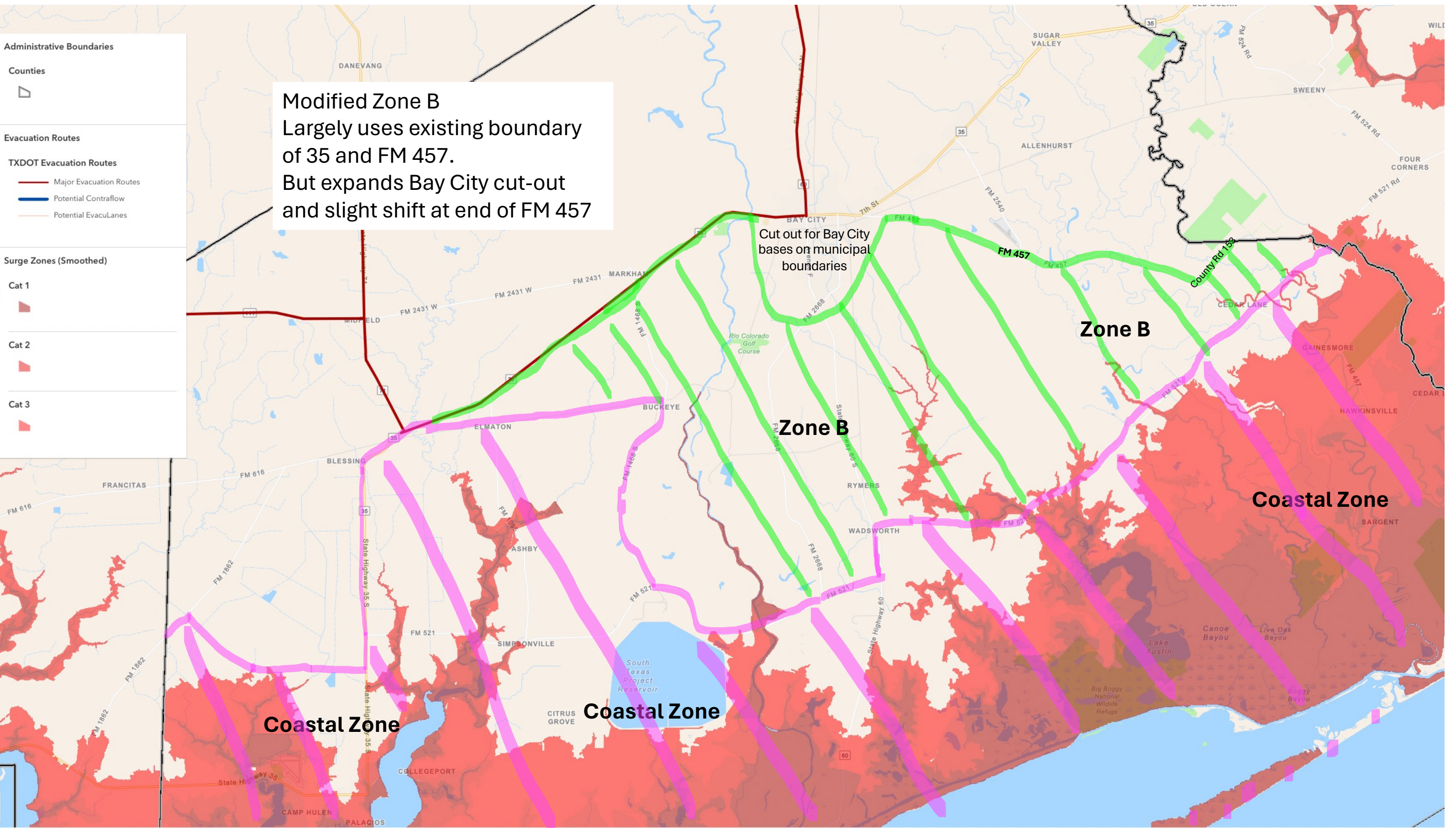


Potential modified Evacuation zones.  
These are just to get the conversations going.





Potential modified Evacuation zones.  
These are just to get the conversations going.





**Modified Zone C**  
Uses some of existing boundaries such as FM 457 but reduces total area.

- TXDOT Evacuation Routes
- Major Evacuation Routes
  - Potential Contraflow
  - Potential EvacuLanes

- Surge Zones (Smoothed)
- Cat 1
  - Cat 2
  - Cat 3
  - Cat 4
  - Cat 5

