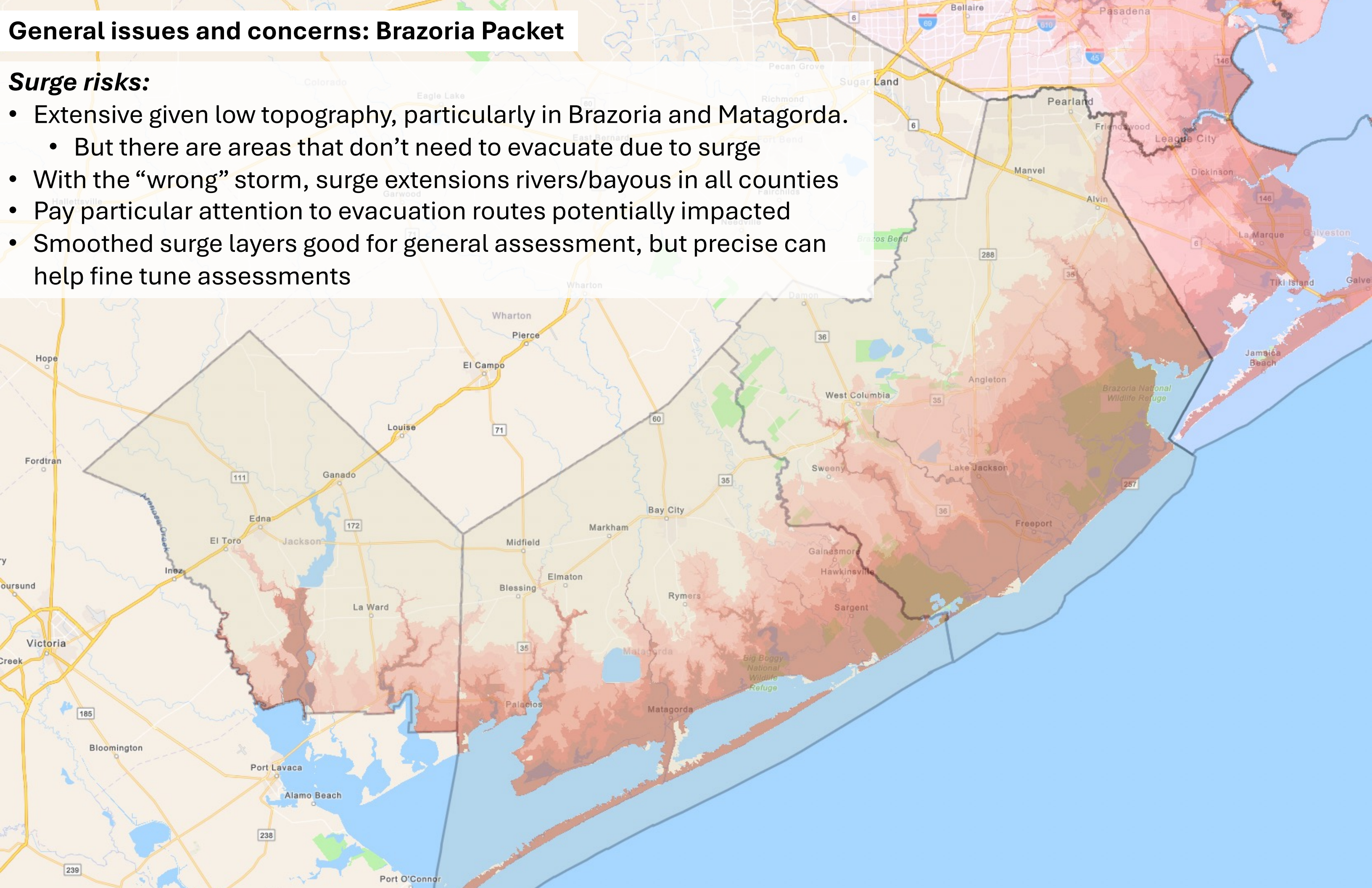
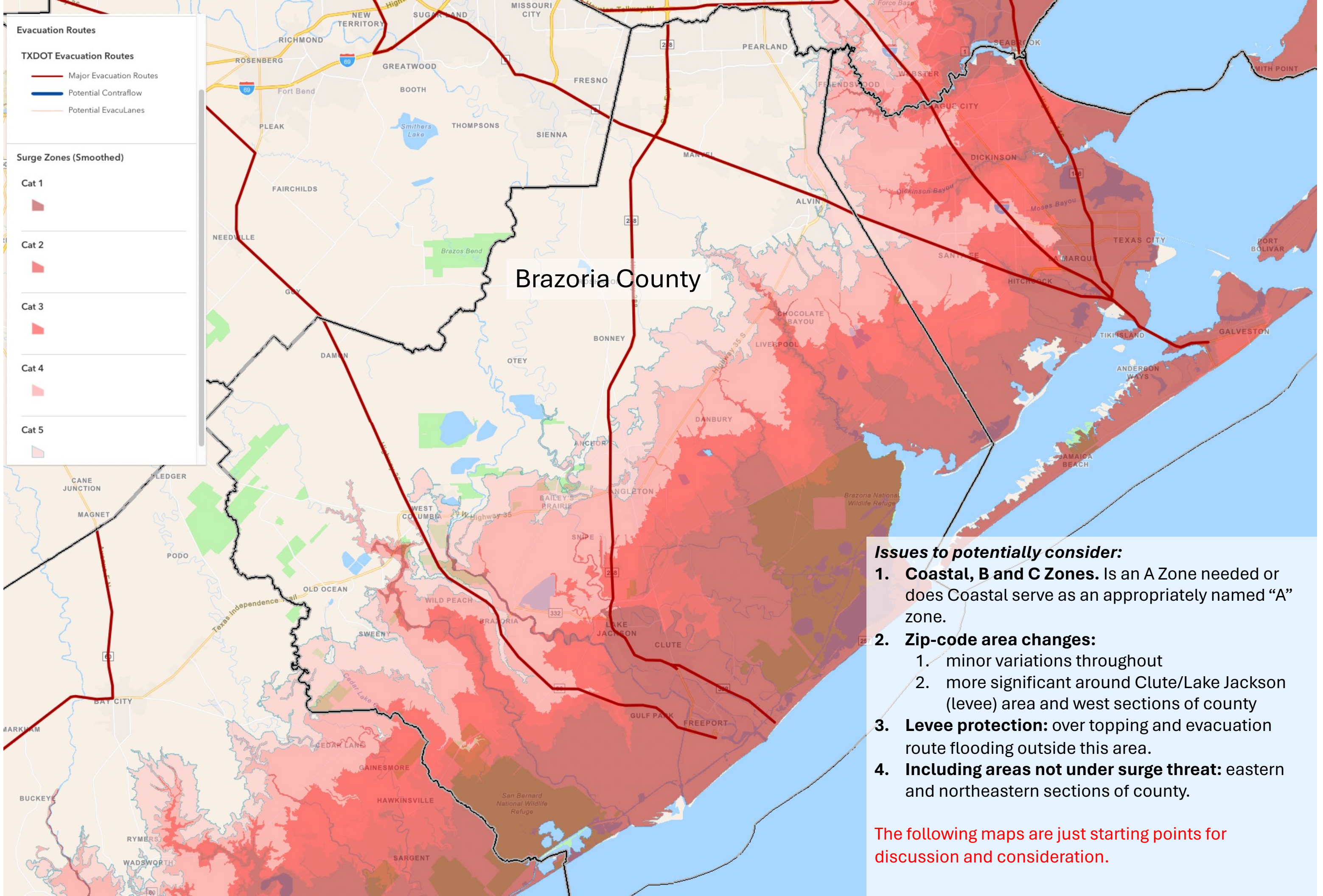


General issues and concerns: Brazoria Packet

Surge risks:

- Extensive given low topography, particularly in Brazoria and Matagorda.
 - But there are areas that don't need to evacuate due to surge
- With the “wrong” storm, surge extensions rivers/bayous in all counties
- Pay particular attention to evacuation routes potentially impacted
- Smoothed surge layers good for general assessment, but precise can help fine tune assessments





Evacuation Routes

TXDOT Evacuation Routes

- Major Evacuation Routes
- Potential Contraflow
- Potential EvacuLanes

Surge Zones (Smoothed)

Cat 1

Cat 2

Cat 3

Cat 4

Cat 5

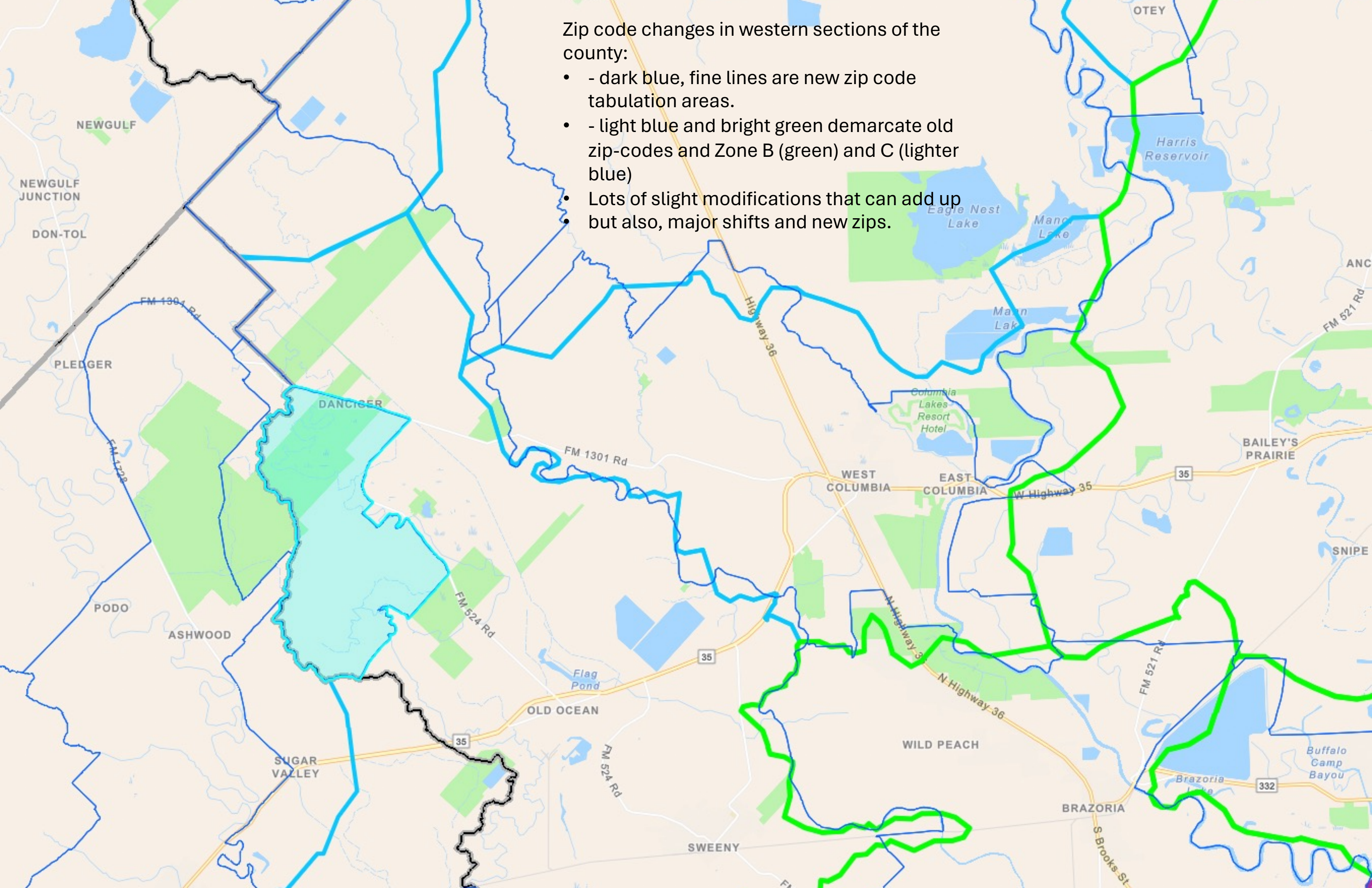
Brazoria County

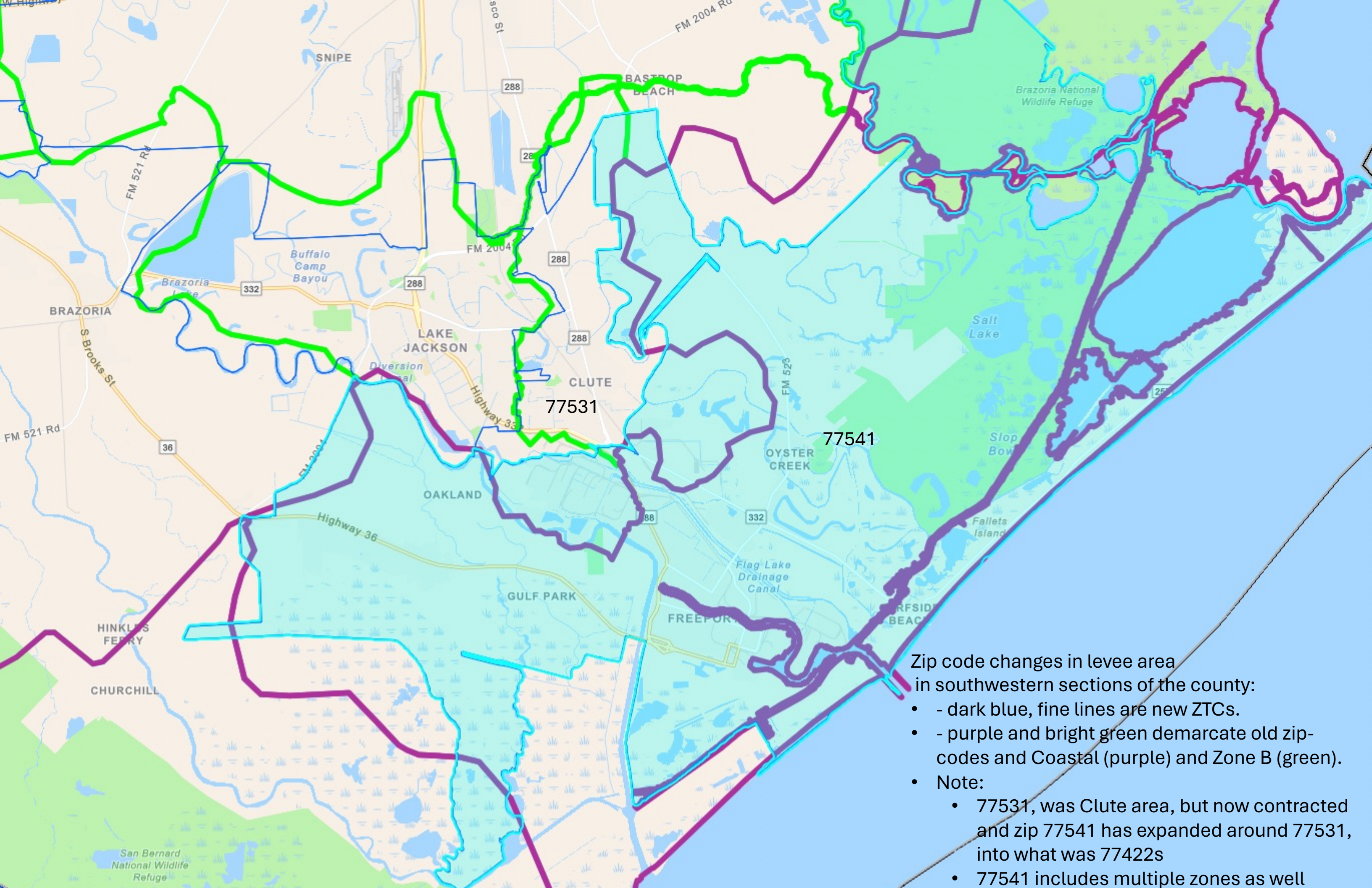
- Issues to potentially consider:**
- Coastal, B and C Zones.** Is an A Zone needed or does Coastal serve as an appropriately named “A” zone.
 - Zip-code area changes:**
 - minor variations throughout
 - more significant around Clute/Lake Jackson (levee) area and west sections of county
 - Levee protection:** over topping and evacuation route flooding outside this area.
 - Including areas not under surge threat:** eastern and northeastern sections of county.

The following maps are just starting points for discussion and consideration.

Zip code changes in western sections of the county:

- - dark blue, fine lines are new zip code tabulation areas.
- - light blue and bright green demarcate old zip-codes and Zone B (green) and C (lighter blue)
- Lots of slight modifications that can add up
- but also, major shifts and new zips.



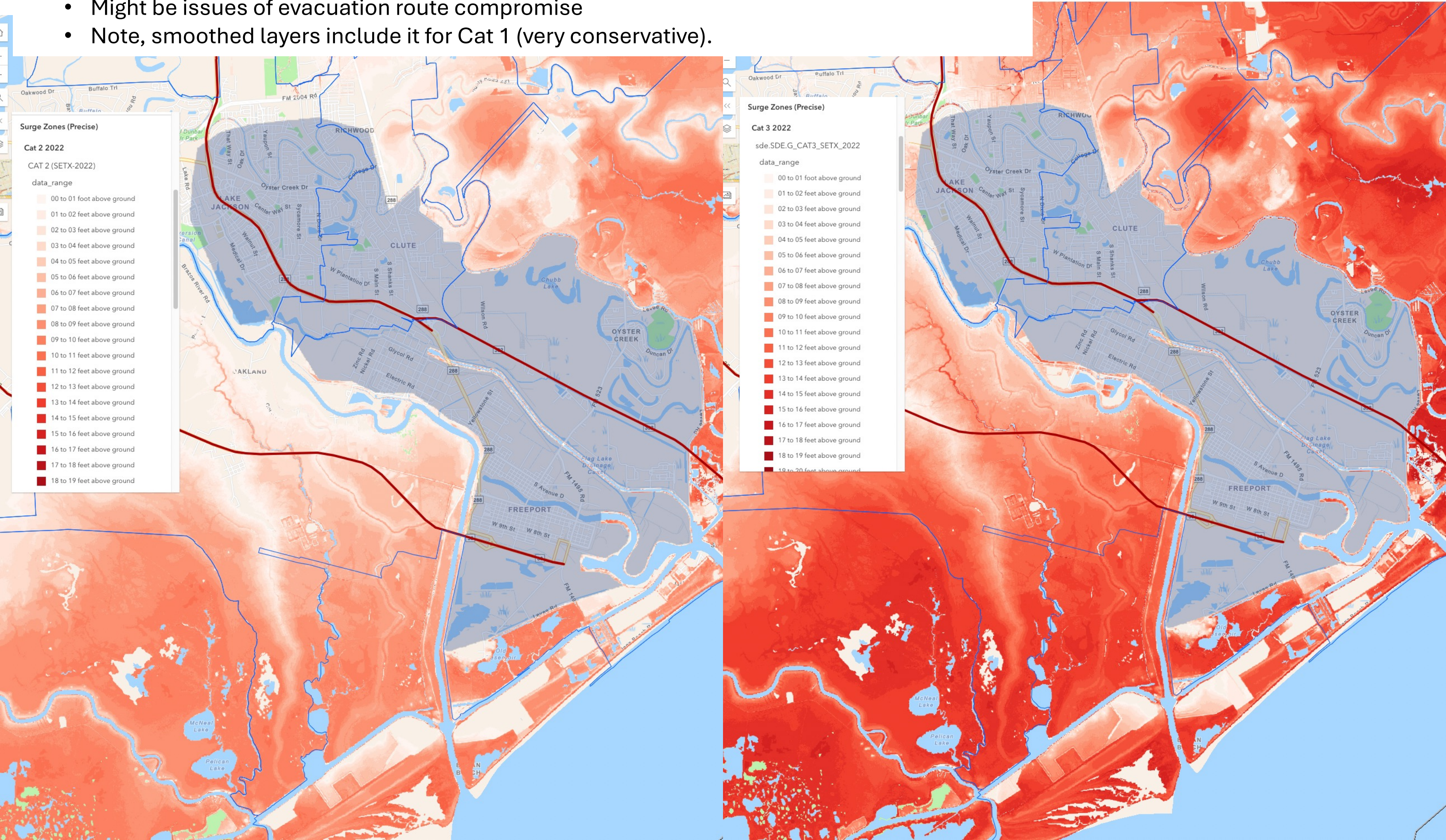


Zip code changes in levee area
in southwestern sections of the county:

- - dark blue, fine lines are new ZTCs.
- - purple and bright green demarcate old zip-codes and Coastal (purple) and Zone B (green).
- Note:
 - 77531, was Clute area, but now contracted and zip 77541 has expanded around 77531, into what was 77422s
 - 77541 includes multiple zones as well

Addressing the Levee area: Levee area with precise surge for Cat 2 (left) and Cat 3 (right)

- Currently lower portion included in Coastal and Upper portion in Zone B
 - When will overtopping occur and where?
 - Might be issues of evacuation route compromise
 - Note, smoothed layers include it for Cat 1 (very conservative).

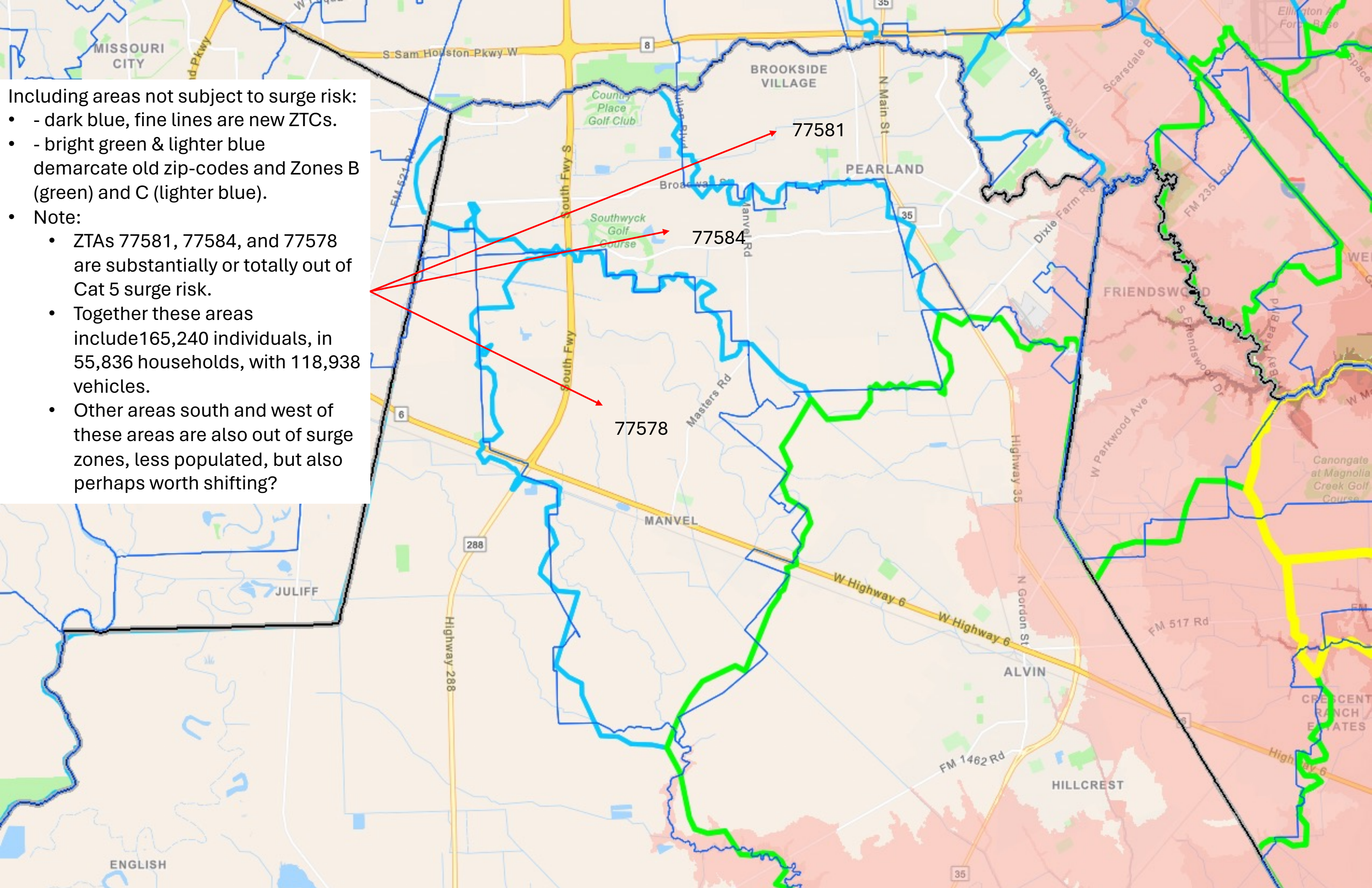


Including areas not subject to surge risk:

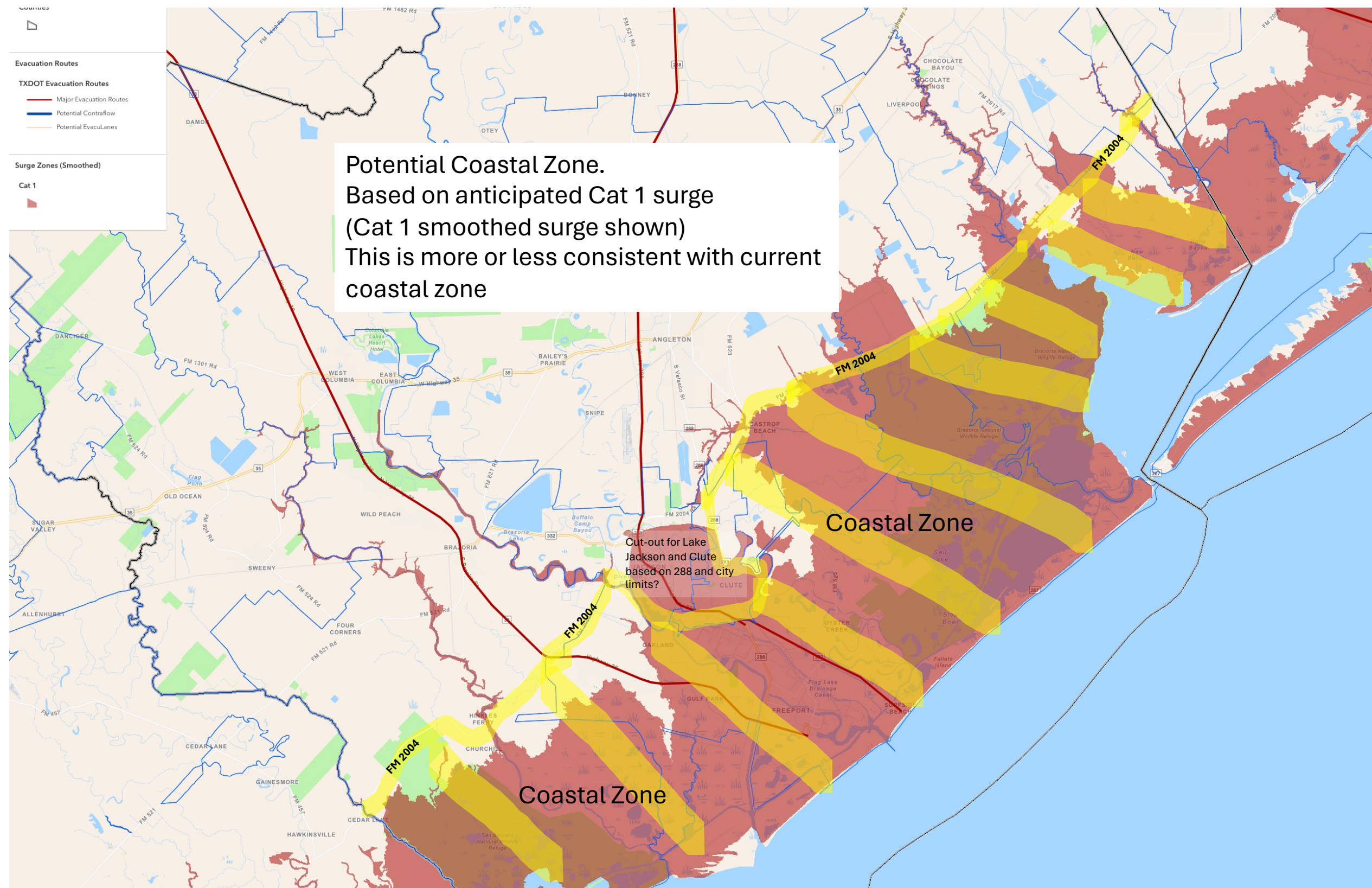
- - dark blue, fine lines are new ZTCs.
- - bright green & lighter blue demarcate old zip-codes and Zones B (green) and C (lighter blue).

• Note:

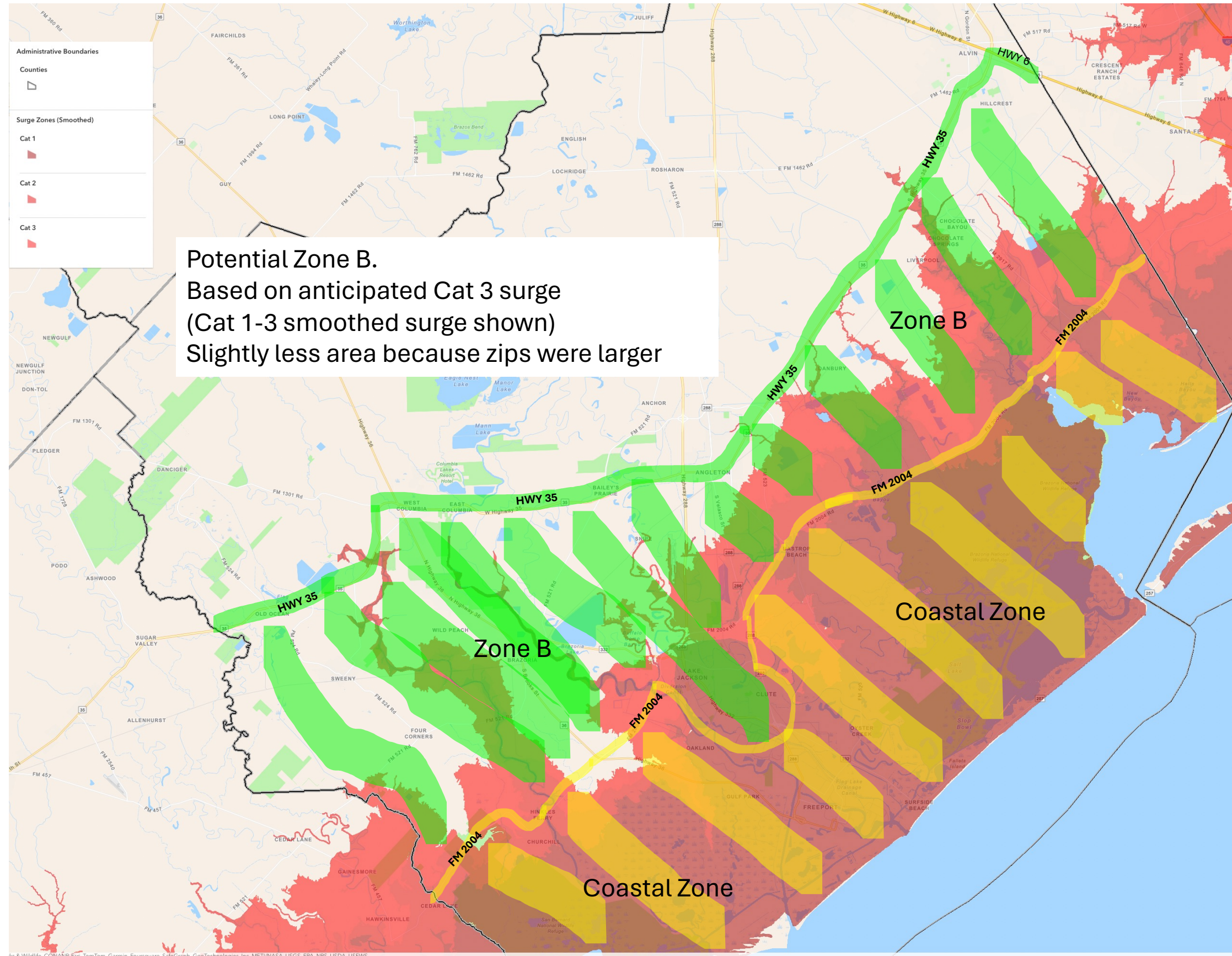
- ZTAs 77581, 77584, and 77578 are substantially or totally out of Cat 5 surge risk.
- Together these areas include 165,240 individuals, in 55,836 households, with 118,938 vehicles.
- Other areas south and west of these areas are also out of surge zones, less populated, but also perhaps worth shifting?



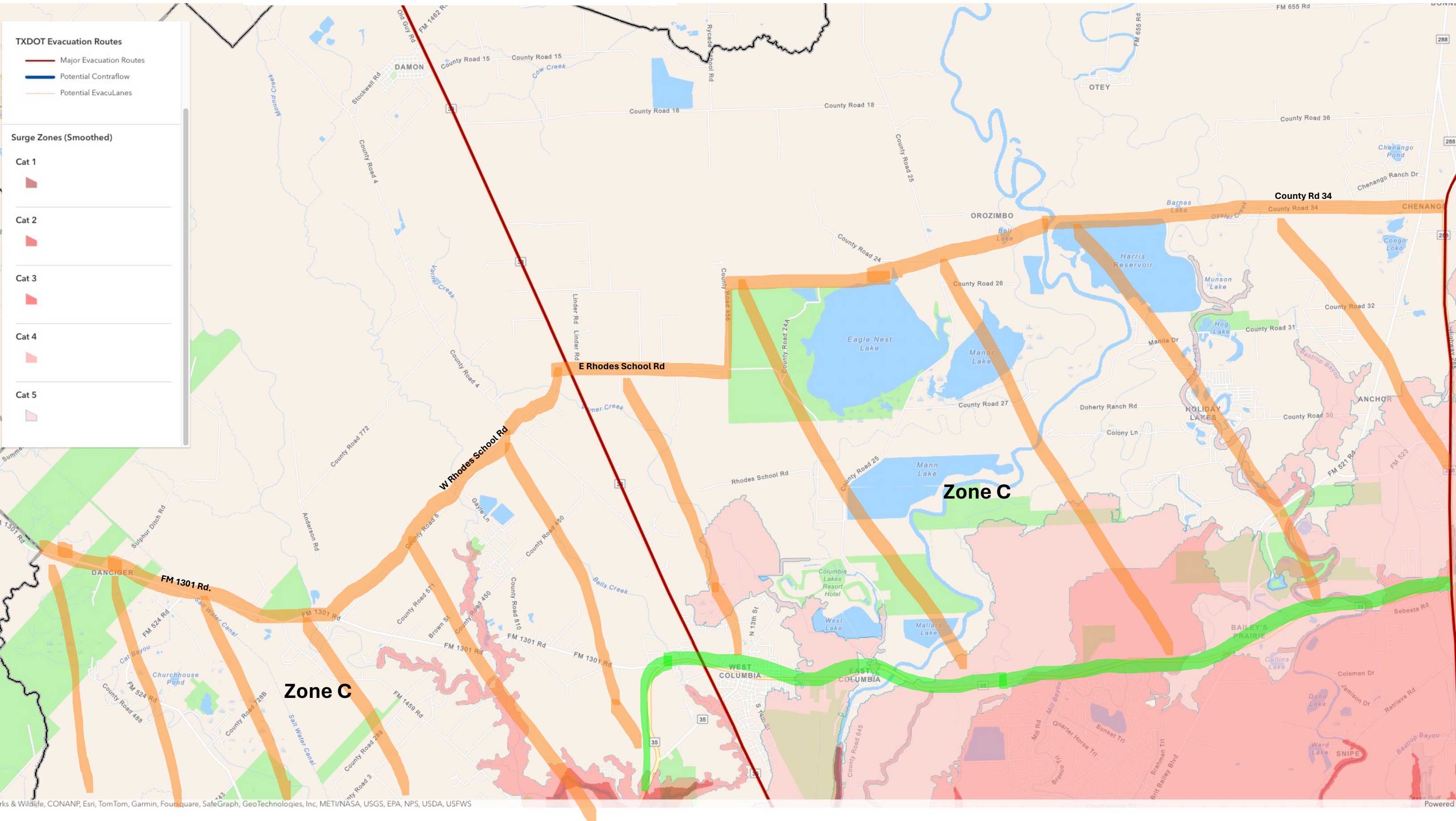
Potential modified Evacuation zones.
These are just to get the conversations going.



Potential modified Evacuation zones.
These are just to get the conversations going.



Potential modified Evacuation zones.
These are just to get the conversations going.



Potential modified Evacuation zones.
These are just to get the conversations going.

