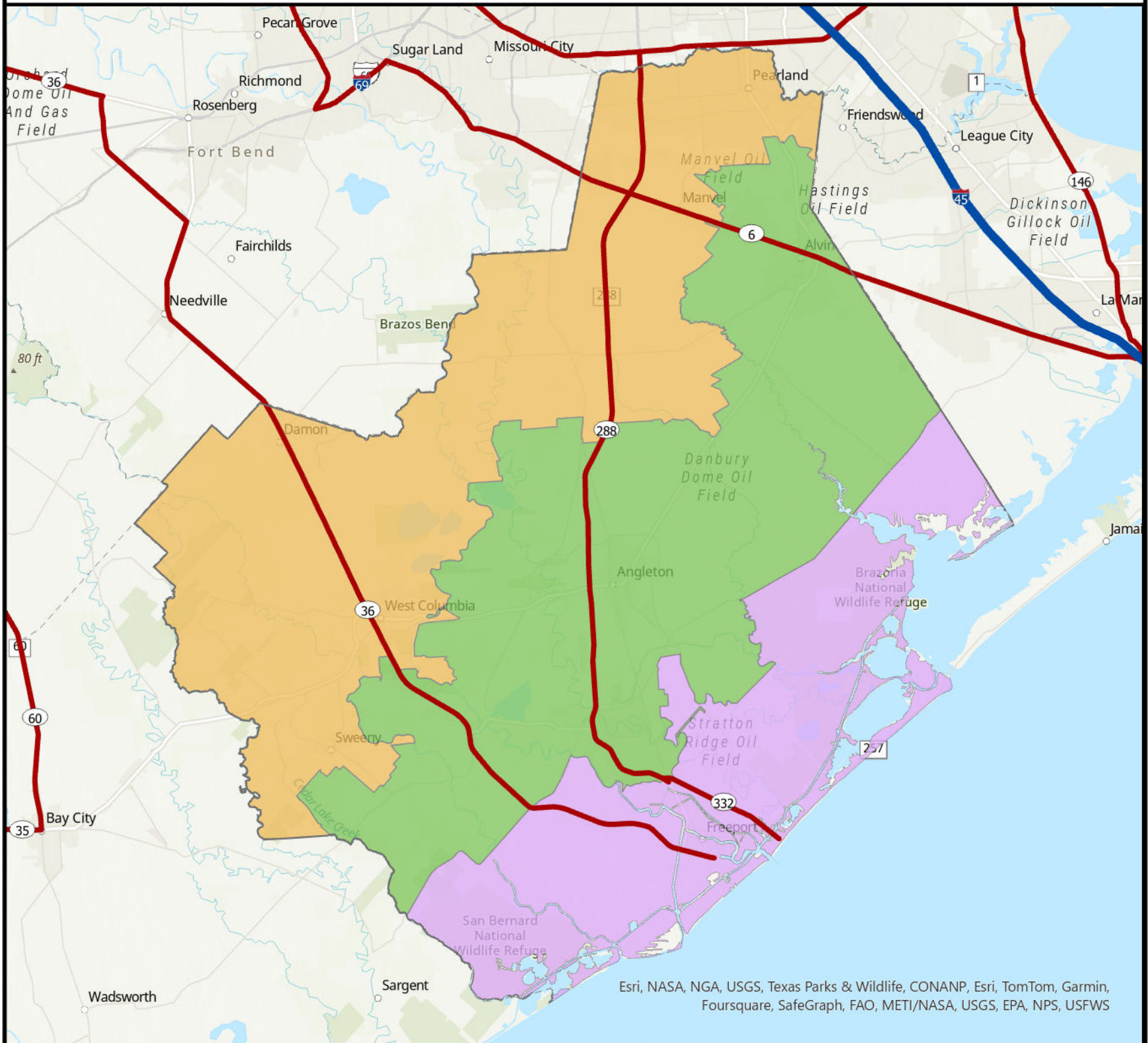


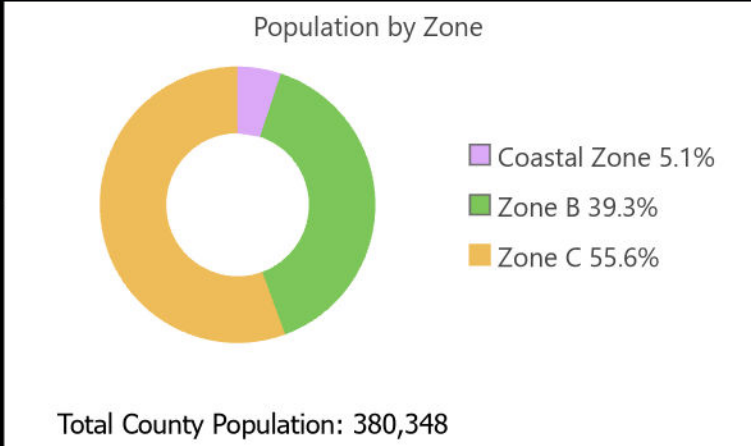
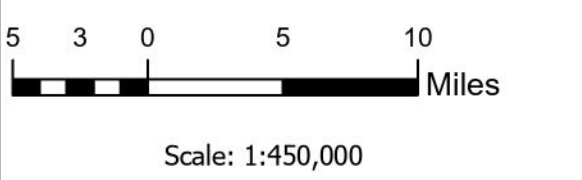
# Brazoria County Evacuation Zones



Esri, NASA, NGA, USGS, Texas Parks & Wildlife, CONANP, Esri, TomTom, Garmin, Foursquare, SafeGraph, FAO, METI/NASA, USGS, EPA, NPS, USFWS

- TXDOT Evacuation Routes**
- Major Evacuation Routes
  - Coastal Zone
  - Zone B
  - Zone C

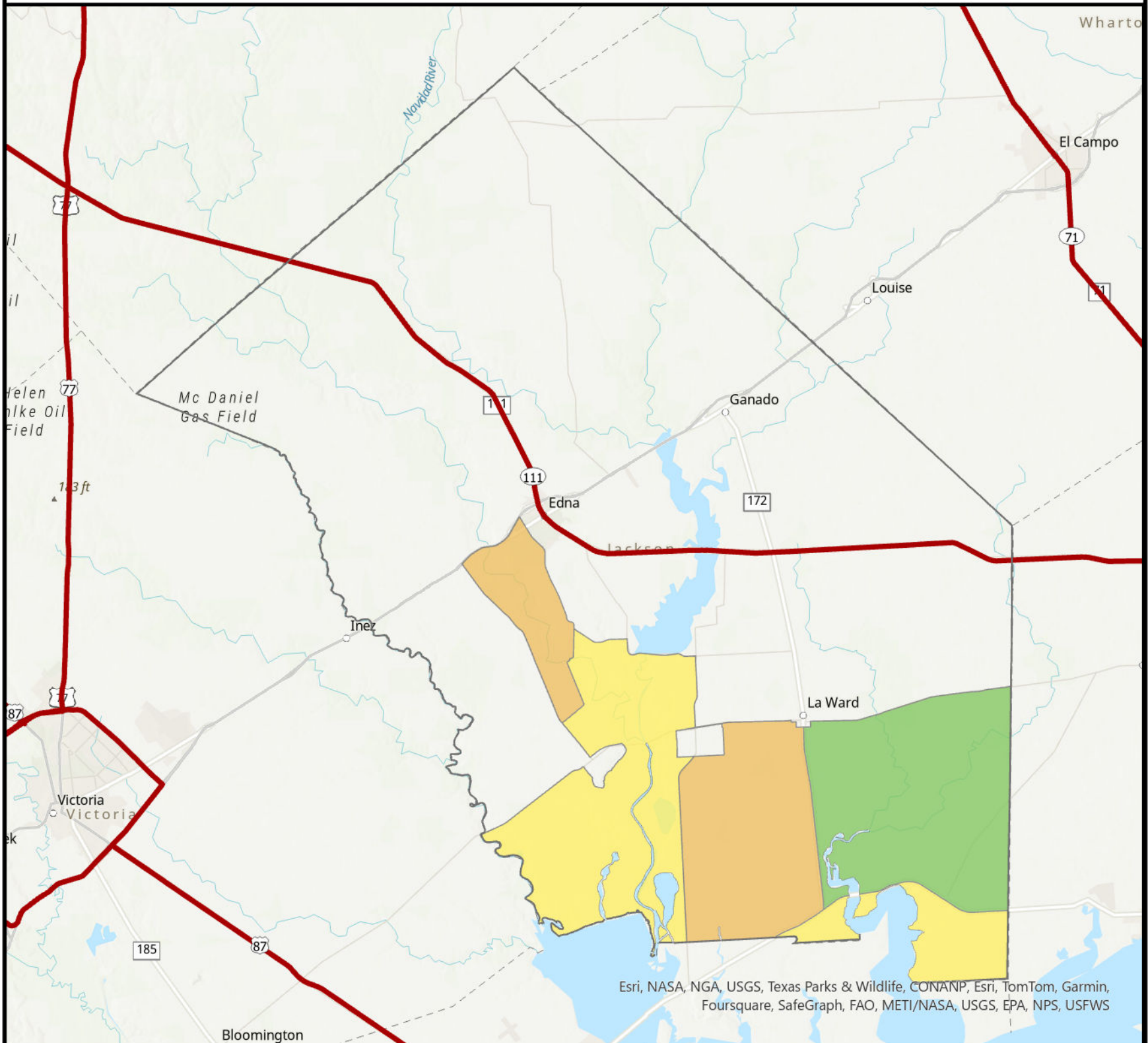
Note: All population, household, and vehicle estimates are based on 2021 Landscan USA 3 arc-second (90m) nighttime population estimates and American Community Survey 2022 five-year estimates to determine population per household and vehicles per household at block group level. (<http://landscan.ornl.gov/about>)



Zone	Population	Households	Vehicles	Hotel Capacity	Hotel Vehicles	MH Pop	MH Vehicles
Coastal Zone	19308	7634	13861	695	850	1787	1298
Zone B	149508	54852	110483	2294	2298	13772	10251
Zone C	211532	72660	149214	1297	1300	19323	13701

**Coastal Zone:** All areas in Zip-zone 77541 and the portions of 77422, 77511, 77534, and 77577 south of FM 2004 and FM 2611.  
**Zone B:** All areas in Zip-zones 77515, 77517, 77531, 77566, and the portions of 77422, 77511, 77534, and 77577 north of FM 2004 and FM 2611.  
**Zone C:** All areas in Zip-zones 77075, 77089, 77430, 77431, 77444, 77480, 77486, 77578, 77581, 77583, and 77584.

# Jackson County Evacuation Zones



Esri, NASA, NGA, USGS, Texas Parks & Wildlife, CONANP, Esri, TomTom, Garmin, Foursquare, SafeGraph, FAO, METI/NASA, USGS, EPA, NPS, USFWS

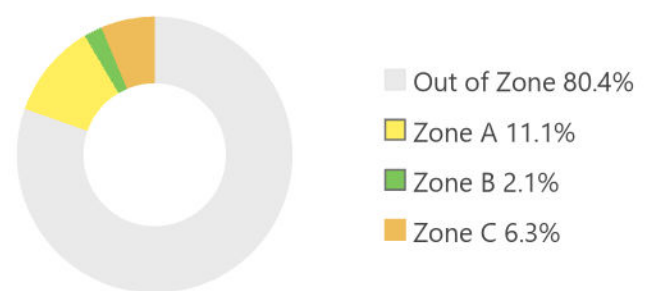
- TXDOT Evacuation Routes**
- Major Evacuation Routes
  - Zone A
  - Zone B
  - Zone C
  - Out of Zone

Note: All population, household, and vehicle estimates are based on 2021 Landscan USA 3 arc-second (90m) nighttime population estimates and American Community Survey 2022 five-year estimates to determine population per household and vehicles per household at block group level. (<http://landscan.ornl.gov/about>)



Scale: 1:350,000

Population by Zone



Total County Population: 14,848

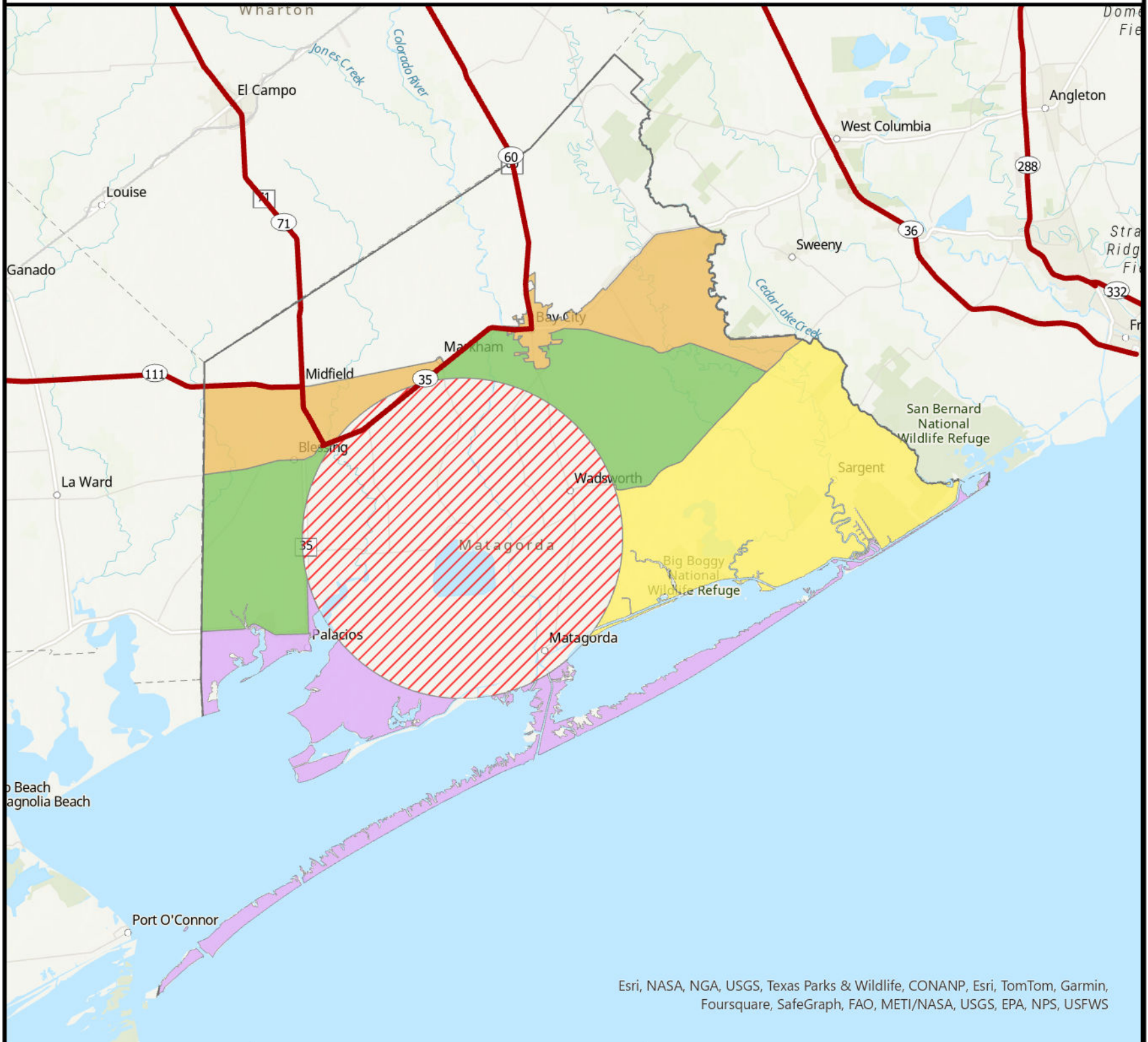
Zone	Population	Households	Vehicles	Hotel Capacity	Hotel Vehicles	MH Pop	MH Vehicles
Out of Zone	11938	4139	8135	146	150	1915	1302
Zone A	1650	707	1301	4	6	267	209
Zone B	319	158	262	0		53	44
Zone C	941	318	679	19	19	152	107

**Zone A:** All areas south of FM 616, east of FM 234, southeast of CR 312, south of FM 1822, and south of FM 3131 to FM 1593, excluding Vanderbilt and Lolita communities. Also, areas south of SH 35.

**Zone B:** All areas south of FM 616 from Highway 172 to county boundary, excluding La Ward community.

**Zone C:** All areas south of US 59 and east of FM 234 and FM 1822. Also, areas south of FM 626, excluding Lolita and La Ward communities.

# Matagorda County Evacuation Zones



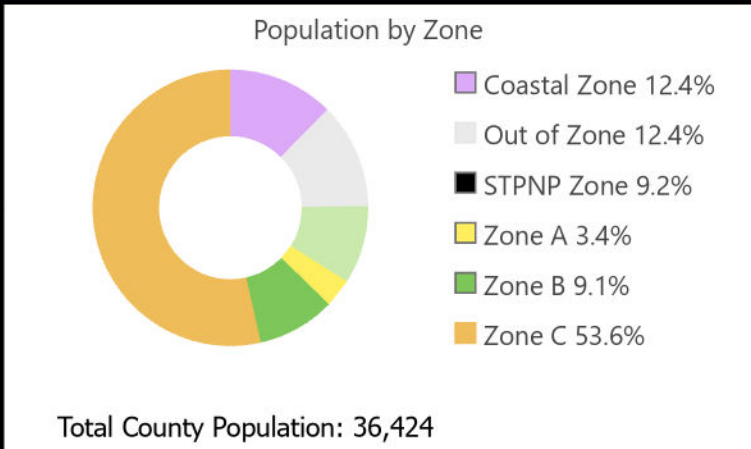
Esri, NASA, NGA, USGS, Texas Parks & Wildlife, CONANP, Esri, TomTom, Garmin, Foursquare, SafeGraph, FAO, METI/NASA, USGS, EPA, NPS, USFWS

- TXDOT Evacuation Routes**
- Major Evacuation Routes
  - Coastal Zone
  - Zone A
  - Zone B
  - Zone C
  - STPNP Zone
  - Out of Zone

Note: All population, household, and vehicle estimates are based on 2021 Landscan USA 3 arc-second (90m) nighttime population estimates and American Community Survey 2022 five-year estimates to determine population per household and vehicles per household at block group level. (<http://landscan.ornl.gov/about>)



Scale: 1:500,000



Zone	Population	Households	Vehicles	Hotel Capacity	Hotel Vehicles	MH Pop	MH Vehicles
Coastal Zone	4529	1827	3374	56	73	549	413
Out of Zone	4504	1629	3462	167	169	541	414
STPNP Zone	3333	1570	3187	137	149	394	383
Zone A	1229	526	915	44	62	140	110
Zone B	3323	1546	3000	29	30	399	364

**Coastal Zone:** All areas south and east of SH 35 to Harrison Rd. Also, all areas south of STPNP to Matagorda, including all barrier islands.  
**STPNP Zone:** All area within 10 miles of South Texas Project Nuclear Plant.  
**Zone A:** All areas south of FM 521 from STPNP to eastern county boundary.  
**Zone B:** All areas south of FM 616 to SH 35, south of SH 35 to Bay City, and south of FM 357, excluding Bay City limits.  
**Zone C:** All areas within Bay City limits. Also, all areas south of SH 35.