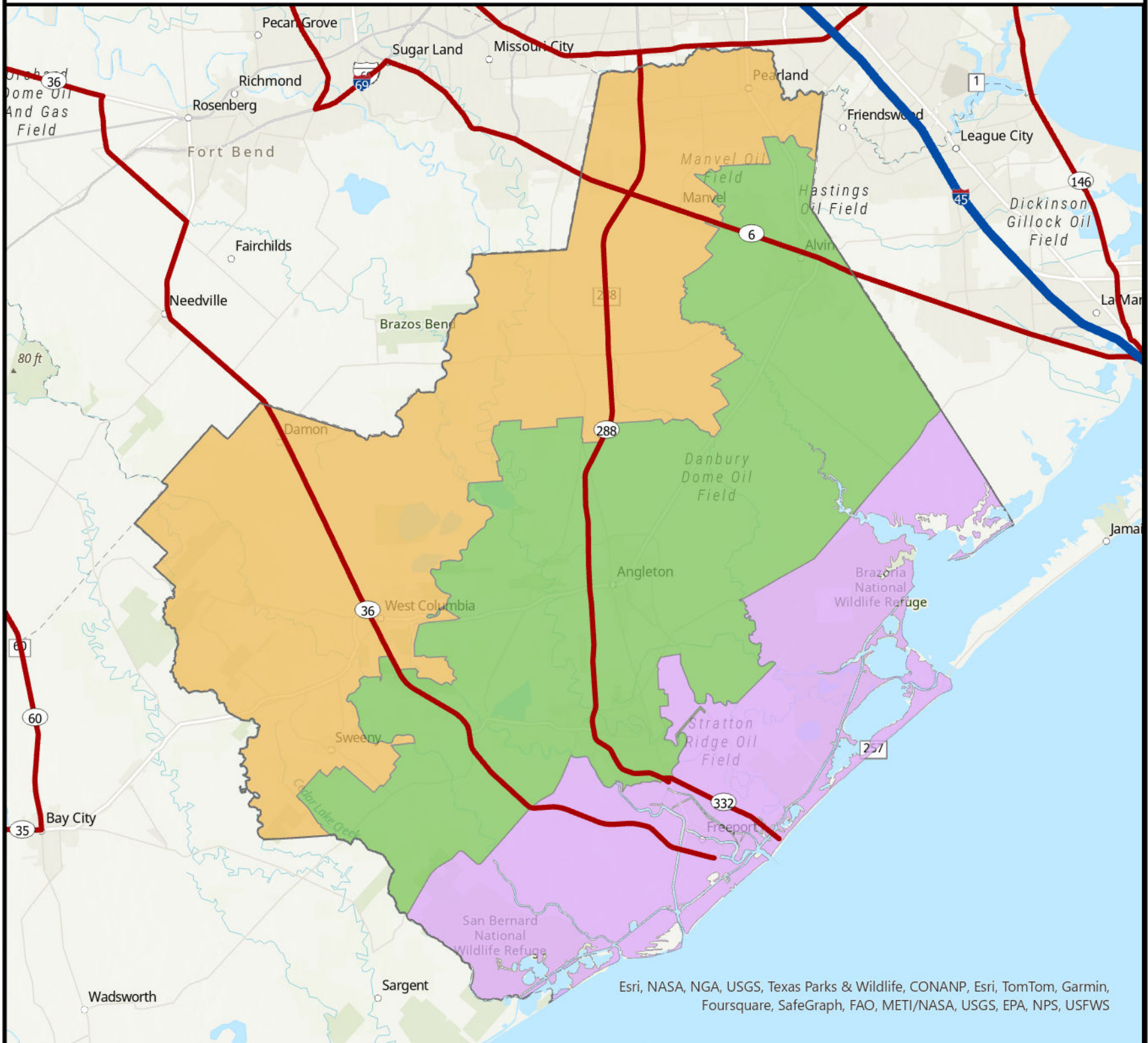


# Brazoria County Evacuation Zones



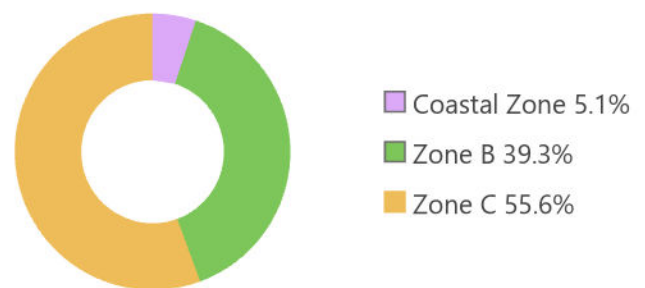
Esri, NASA, NGA, USGS, Texas Parks & Wildlife, CONANP, Esri, TomTom, Garmin, Foursquare, SafeGraph, FAO, METI/NASA, USGS, EPA, NPS, USFWS

- TXDOT Evacuation Routes**
- Major Evacuation Routes
  - Coastal Zone
  - Zone B
  - Zone C

Note: All population, household, and vehicle estimates are based on 2021 Landscan USA 3 arc-second (90m) nighttime population estimates and American Community Survey 2022 five-year estimates to determine population per household and vehicles per household at block group level. (<http://landscan.ornl.gov/about>)



Population by Zone



Total County Population: 380,348

Zone	Population	Households	Vehicles	Hotel Capacity	Hotel Vehicles	MH Pop	MH Vehicles
Coastal Zone	19308	7634	13861	695	850	1787	1298
Zone B	149508	54852	110483	2294	2298	13772	10251
Zone C	211532	72660	149214	1297	1300	19323	13701

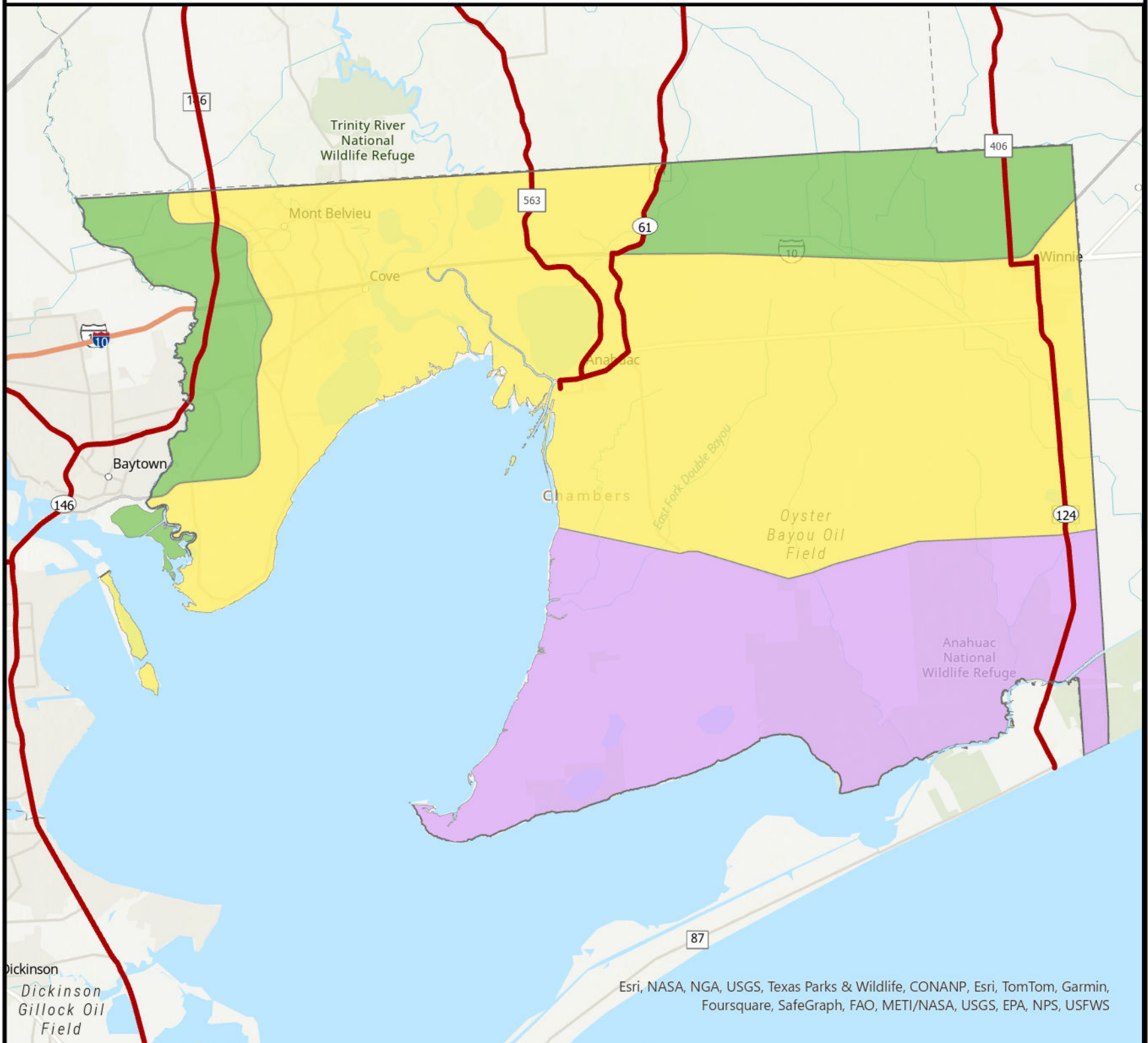
**Coastal Zone:** All areas in Zip-zone 77541 and the portions of 77422, 77511, 77534, and 77577 south of FM 2004 and FM 2611.

**Zone B:** All areas in Zip-zones 77515, 77517, 77531, 77566, and the portions of 77422, 77511, 77534, and 77577 north of FM 2004 and FM 2611.

**Zone C:** All areas in Zip-zones 77075, 77089, 77430, 77431, 77444, 77480, 77486, 77578, 77581, 77583, and 77584.



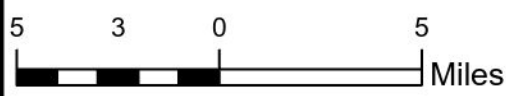
# Chambers County Evacuation Zones



Esri, NASA, NGA, USGS, Texas Parks & Wildlife, CONANP, Esri, TomTom, Garmin, Foursquare, SafeGraph, FAO, METI/NASA, USGS, EPA, NPS, USFWS

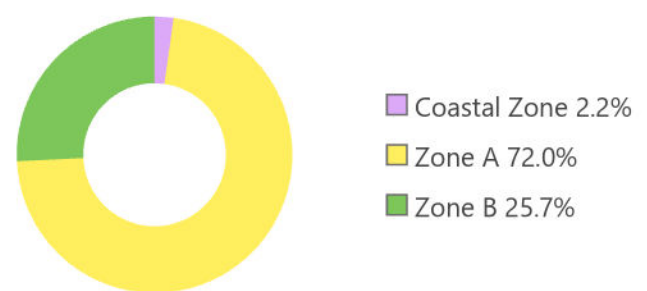
- TXDOT Evacuation Routes**
- Major Evacuation Routes
  - Potential EvacuLanes
  - Coastal Zone
  - Zone A
  - Zone B

Note: All population, household, and vehicle estimates are based on 2021 Landscan USA 3 arc-second (90m) nighttime population estimates and American Community Survey 2022 five-year estimates to determine population per household and vehicles per household at block group level. (<http://landscan.ornl.gov/about>)



Scale: 1:300,000

Population by Zone

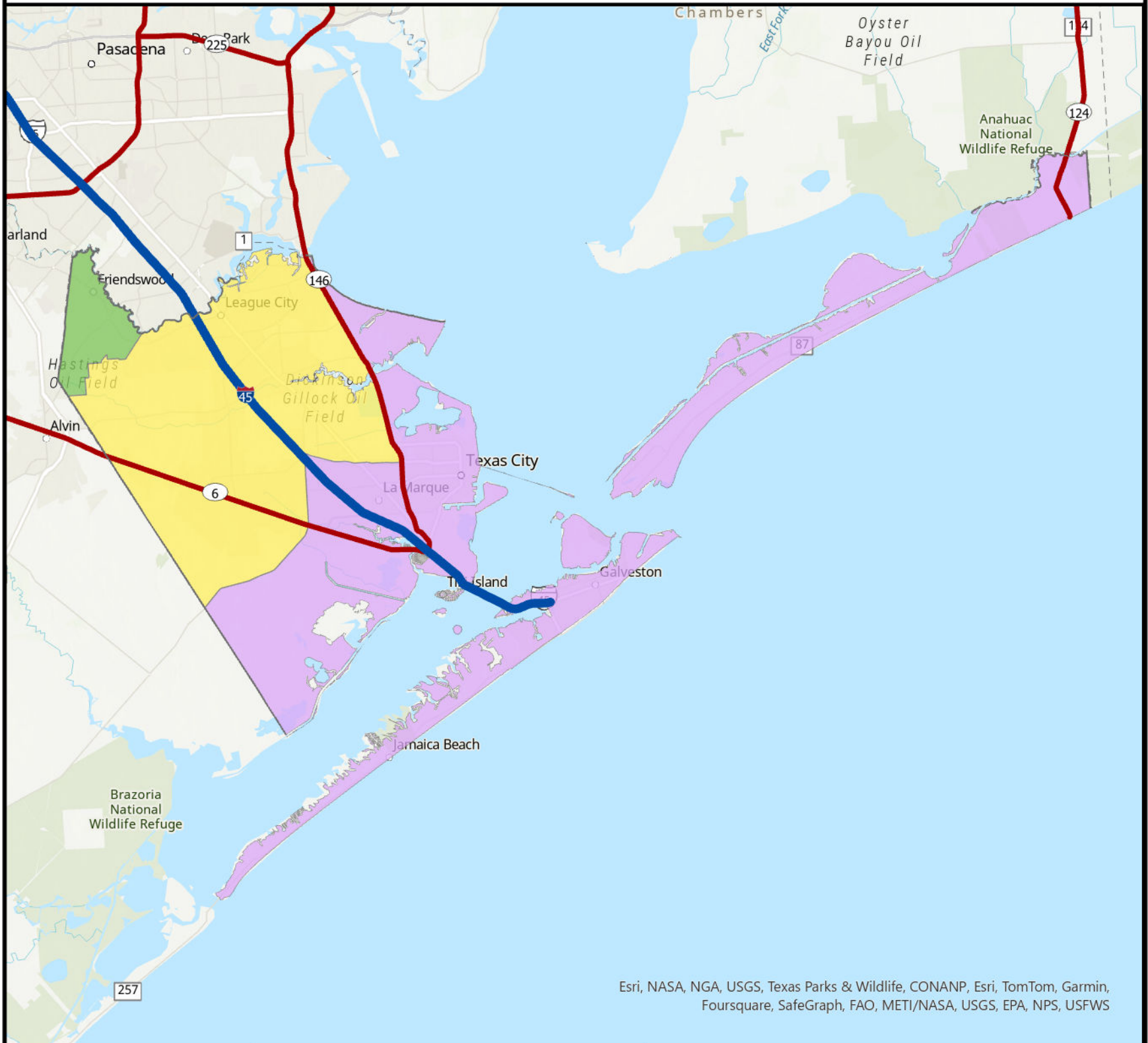


Total County Population: 46,071

Zone	Population	Households	Vehicles	Hotel Capacity	Hotel Vehicles	MH Pop	MH Vehicles
Coastal Zone	1016	390	692	12	12	135	93
Zone A	33194	11284	25222	500	500	4502	3423
Zone B	11861	3894	8506	423	424	1612	1151

**Coastal Zone:** All areas south of Whites Ranch Rd.  
**Zone A:** All areas east of Grand Pkwy to SH 61. South of IH 10.  
**Zone B:** All west of Grand Pkwy plus area east of SH 61 and north of IH 10.

# Galveston County Evacuation Zones



Esri, NASA, NGA, USGS, Texas Parks & Wildlife, CONANP, Esri, TomTom, Garmin, Foursquare, SafeGraph, FAO, METI/NASA, USGS, EPA, NPS, USFWS

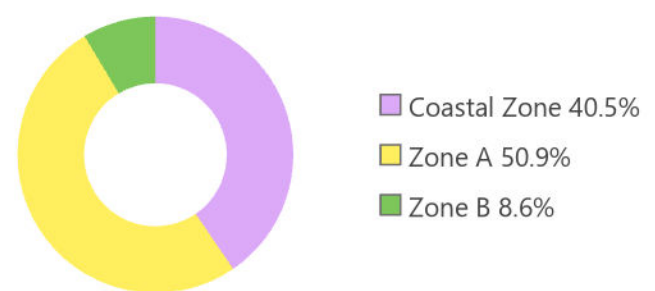
- TXDOT Evacuation Routes**
- Major Evacuation Routes
  - Potential Contraflow
  - Coastal Zone
  - Zone A
  - Zone B

Note: All population, household, and vehicle estimates are based on 2021 Landscan USA 3 arc-second (90m) nighttime population estimates and American Community Survey 2022 five-year estimates to determine population per household and vehicles per household at block group level. (<http://landscan.ornl.gov/about>)



Scale: 1:400,000

Population by Zone



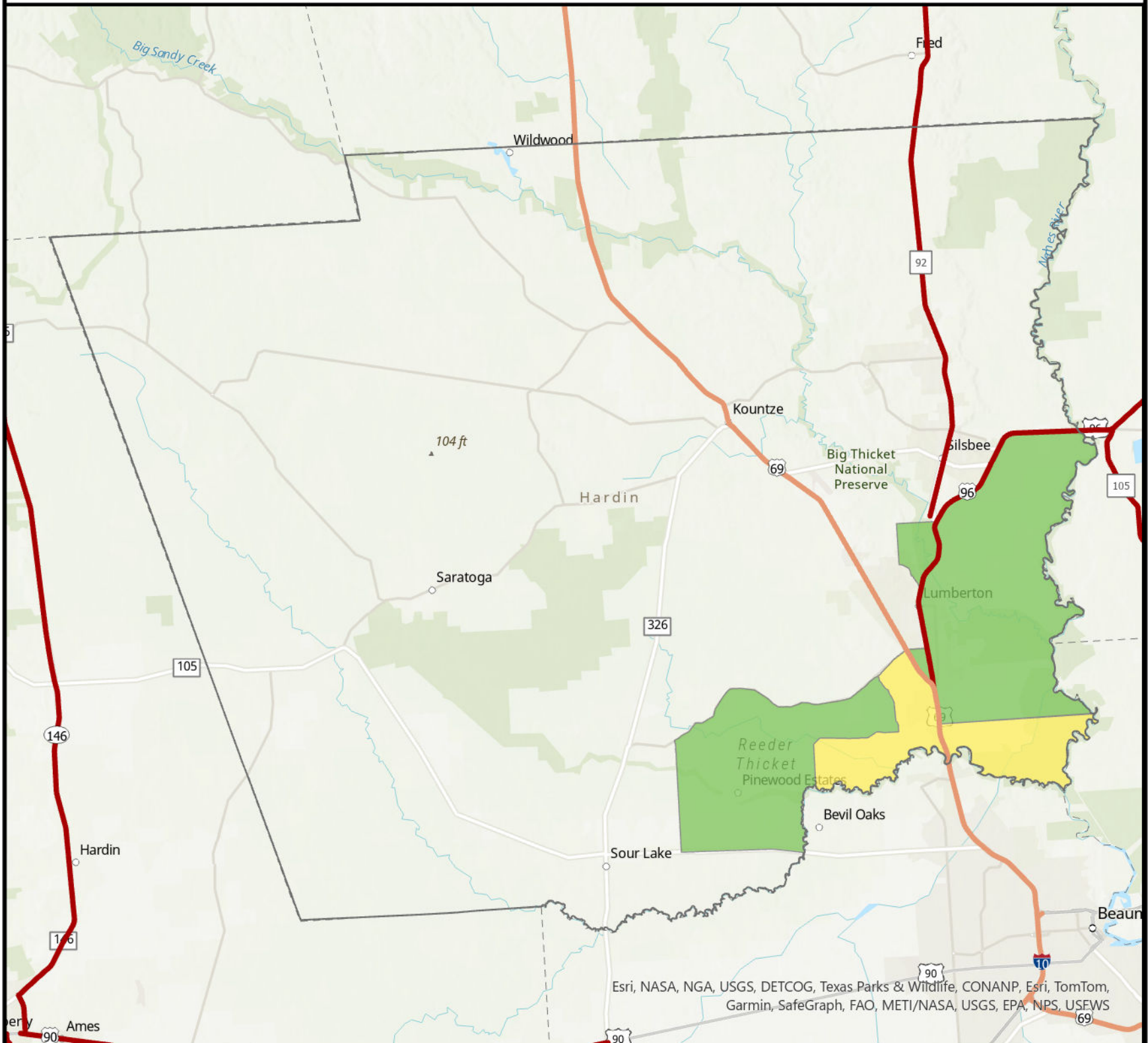
Total County Population: 341,714

Zone	Population	Households	Vehicles	Hotel Capacity	Hotel Vehicles	MH Pop	MH Vehicles
Coastal Zone	138272	58811	98479	9288	10226	5862	4185
Zone A	174077	66557	135764	1404	1416	7415	5808
Zone B	29365	10073	21121	0		1250	905

**Coastal Zone:** All areas including the barrier islands and Bolivar Peninsula. Mainland south and east of Camp Wallace Rd. (FM 2004) to IH 45. South of Emmett F. Lowrey Expressway (FM 1764) to Hwy 146. East of Hwy146 to Kemah.  
**Zone A:** All of Galveston County except for and not including areas within Friendswood city limits.  
**Zone B:** All areas within Friendswood city limits.

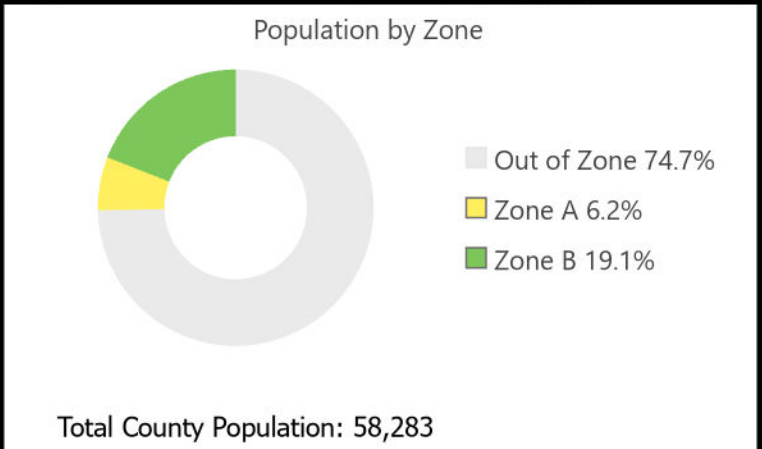
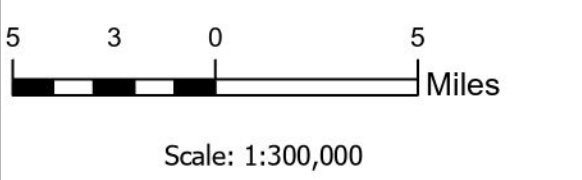


# Hardin County Evacuation Zones



- TXDOT Evacuation Routes**
- Major Evacuation Routes
  - Potential EvacuLanes
  - Zone A
  - Zone B
  - Out of Zone

Note: All population, household, and vehicle estimates are based on 2021 Landscan USA 3 arc-second (90m) nighttime population estimates and American Community Survey 2022 five-year estimates to determine population per household and vehicles per household at block group level. (<http://landscan.ornl.gov/about>)

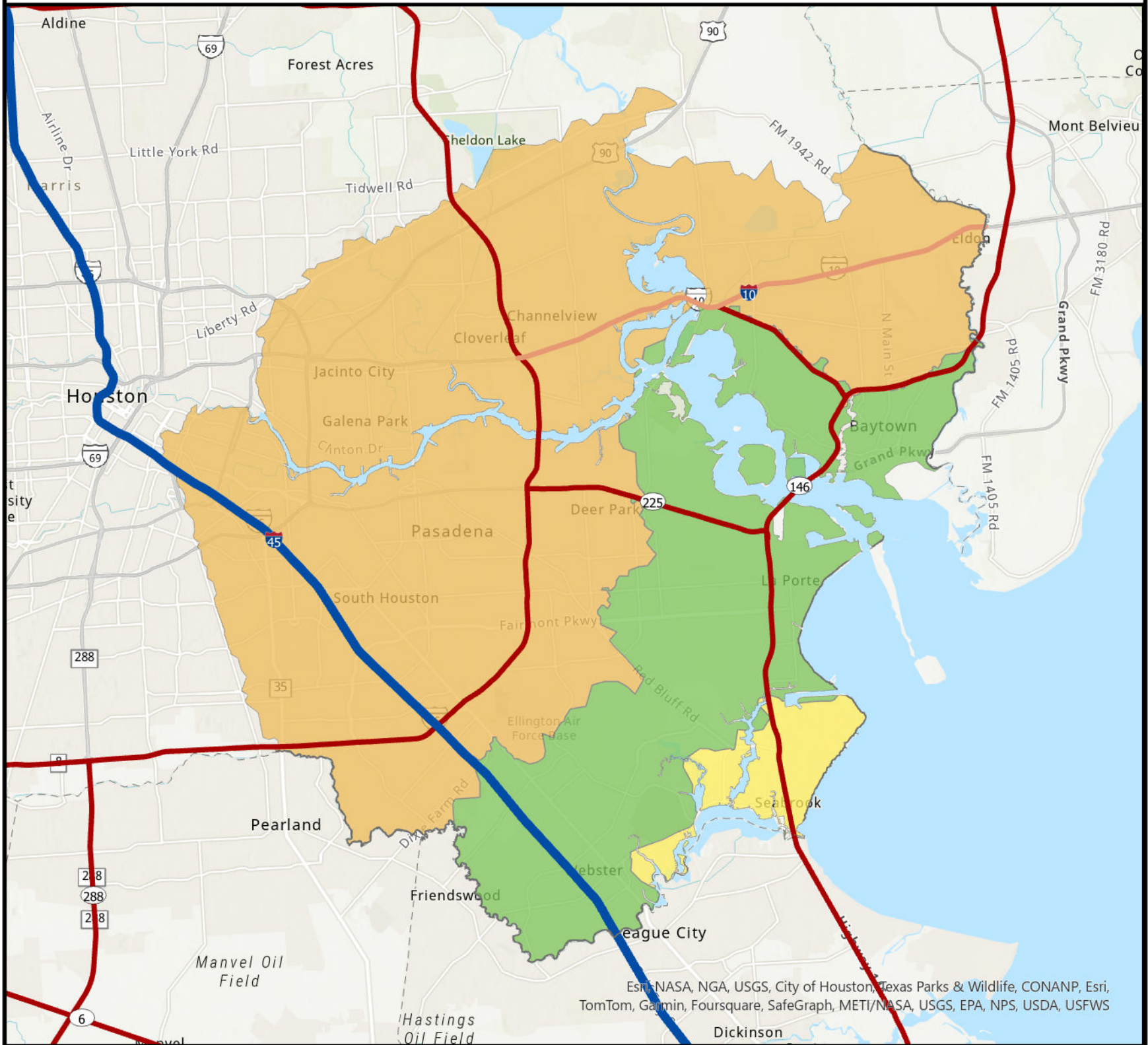


Zone	Population	Households	Vehicles	Hotel Capacity	Hotel Vehicles	MH Pop	MH Vehicles
Out of Zone	43539	16516	32384	250	251	11339	8393
Zone A	3636	1198	2956	2	3	946	767
Zone B	11108	4039	7924	33	34	2885	2055

**Zone A:** South of Keith Rd from western end to Calahan Rd, East of Calahan Rd and Temple Rd and south of FM 421 (Ariola Rd) to US 69. South of intersection of Keith Rd and US 69 east to Neches River.  
**Zone B:** East of Pine Ridge and south FM 421 to US 96 to the Neches River. Also, Coefield Ridge area east of Taft Avenue.

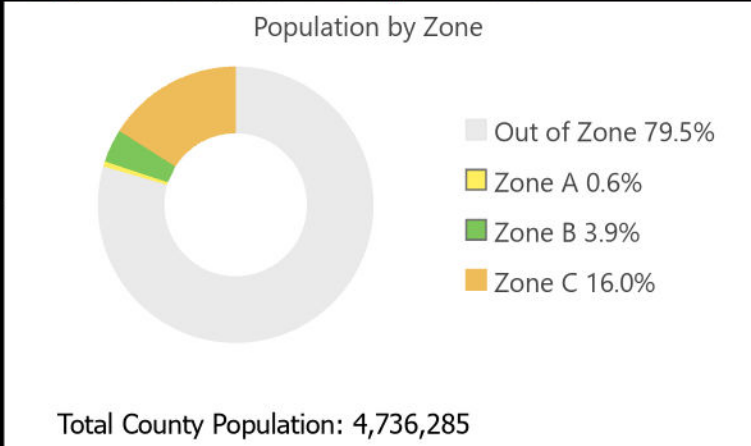
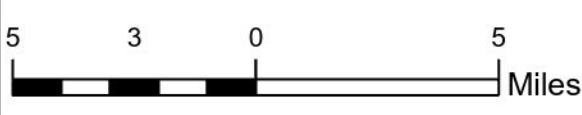


# Harris County Evacuation Zones



- TXDOT Evacuation Routes**
- Major Evacuation Routes
  - Potential Contraflow
  - Potential EvacuLanes
- Evacuation Zones**
- Zone A
  - Zone B
  - Zone C
  - Out of Zone

Note: All population, household, and vehicle estimates are based on 2021 Landscan USA 3 arc-second (90m) nighttime population estimates and American Community Survey 2022 five-year estimates to determine population per household and vehicles per household at block group level. (<http://landscan.ornl.gov/about>)

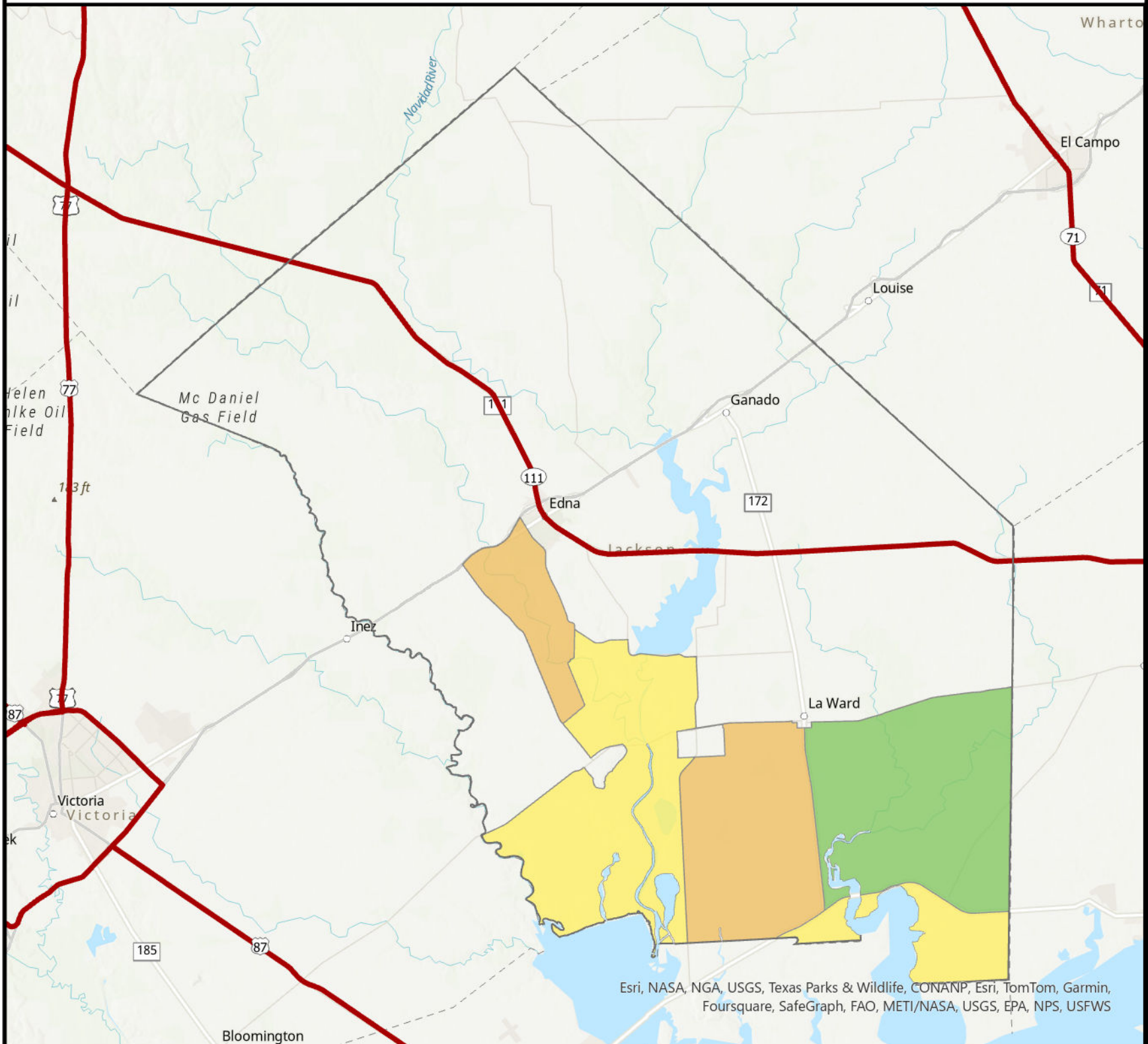


Zone	Population	Households	Vehicles	Hotel Capacity	Hotel Vehicles	MH Pop	MH Vehicles
Out of Zone	3764149	1402327	2464432	68934	69082	101054	66703
Zone A	28545	12537	22258	1263	1278	765	608
Zone B	184550	73564	133110	3607	3610	4952	3614
Zone C	759041	255093	480163	11405	11419	20388	12959

**Zone A:** All areas in Zip-zone 77586, and the portions of 77058 south of NASA Rd 1.  
**Zone B:** All areas in Zip-zones 77059, 77062, 77507, 77520, 77571, 77598, and the portions of 77058 north of NASA Rd 1 and portions of 77546 north and west of West Bay Area Blvd.  
**Zone C:** All areas in Zip-zones 77011, 77012, 77013, 77015, 77017, 77023, 77029, 77034, 77049, 77061, 77075, 77087, 77089, 77502, 77503, 77504, 77505, 77506, 77521, 77530, 77536, 77547, 77562, and 77587.



# Jackson County Evacuation Zones



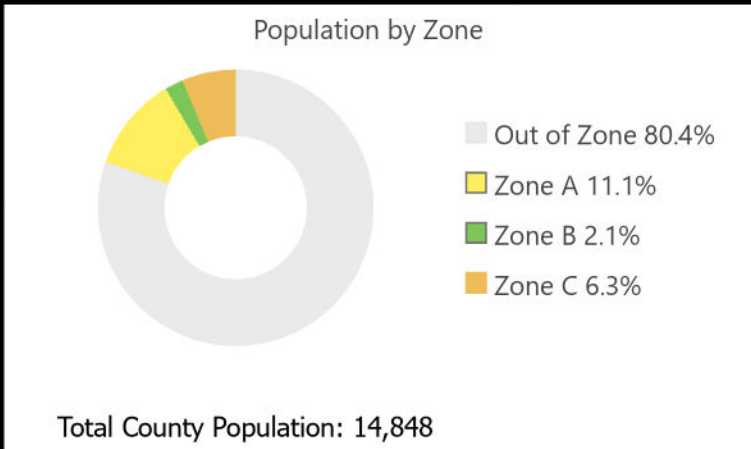
Esri, NASA, NGA, USGS, Texas Parks & Wildlife, CONANP, Esri, TomTom, Garmin, Foursquare, SafeGraph, FAO, METI/NASA, USGS, EPA, NPS, USFWS

- TXDOT Evacuation Routes**
- Major Evacuation Routes
  - Zone A
  - Zone B
  - Zone C
  - Out of Zone

Note: All population, household, and vehicle estimates are based on 2021 Landscan USA 3 arc-second (90m) nighttime population estimates and American Community Survey 2022 five-year estimates to determine population per household and vehicles per household at block group level. (<http://landscan.ornl.gov/about>)



Scale: 1:350,000

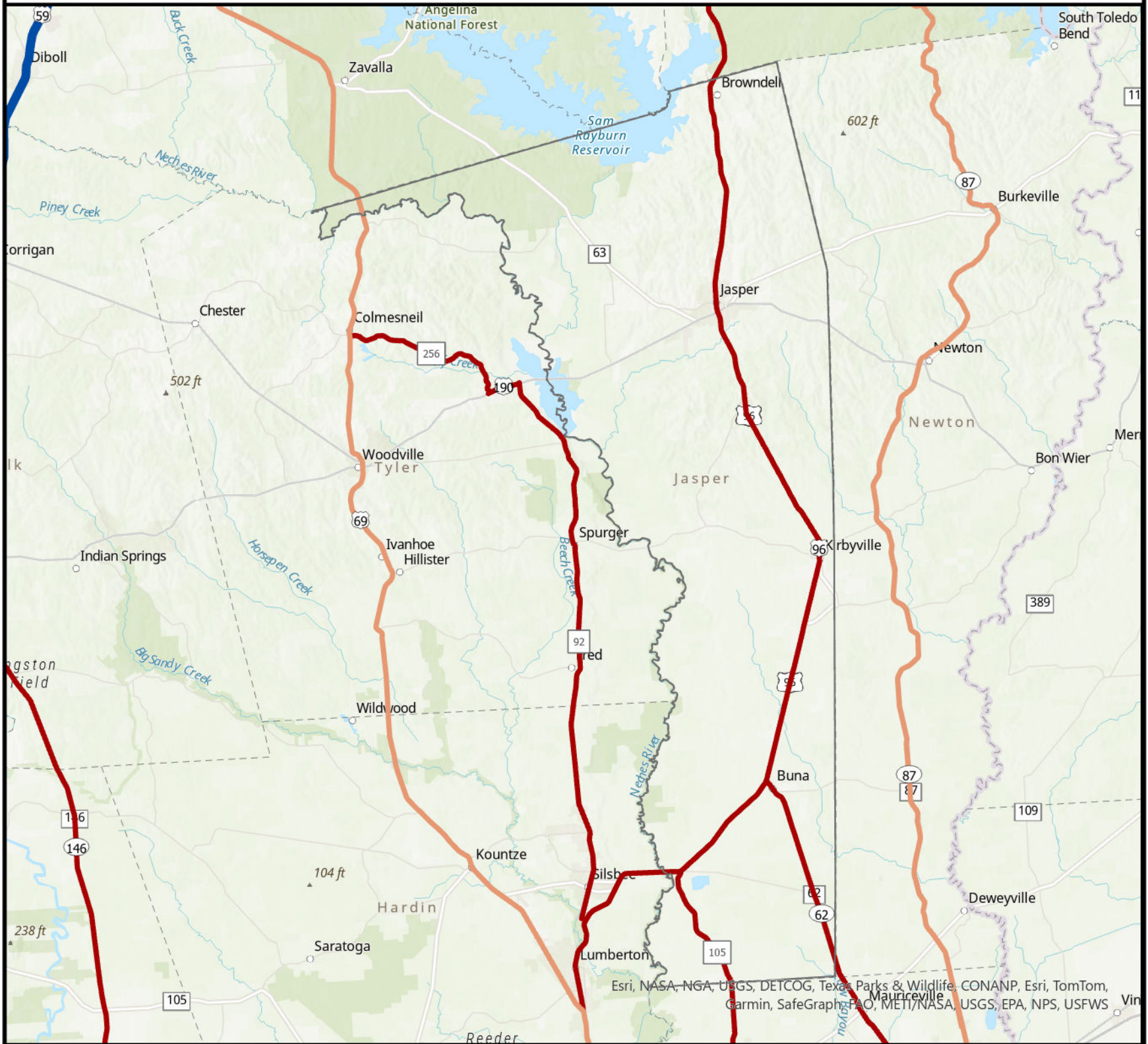


Zone	Population	Households	Vehicles	Hotel Capacity	Hotel Vehicles	MH Pop	MH Vehicles
Out of Zone	11938	4139	8135	146	150	1915	1302
Zone A	1650	707	1301	4	6	267	209
Zone B	319	158	262	0		53	44
Zone C	941	318	679	19	19	152	107

**Zone A:** All areas south of FM 616, east of FM 234, southeast of CR 312, south of FM 1822, and south of FM 3131 to FM 1593, excluding Vanderbilt and Lolita communities. Also, areas south of SH 35.  
**Zone B:** All areas south of FM 616 from Highway 172 to county boundary, excluding La Ward community.  
**Zone C:** All areas south of US 59 and east of FM 234 and FM 1822. Also, areas south of FM 626, excluding Lolita and La Ward communities.



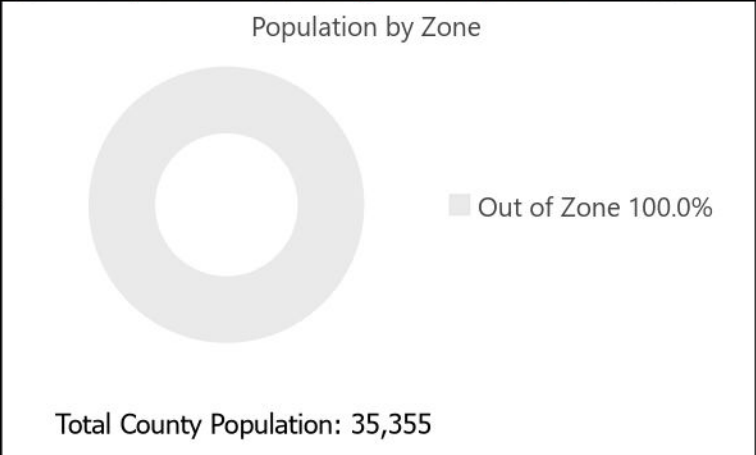
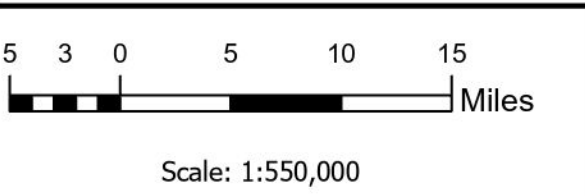
# Jasper County Evacuation Zones



**TXDOT Evacuation Routes**

- Major Evacuation Routes
- Potential EvacuLanes
- Out of Zone

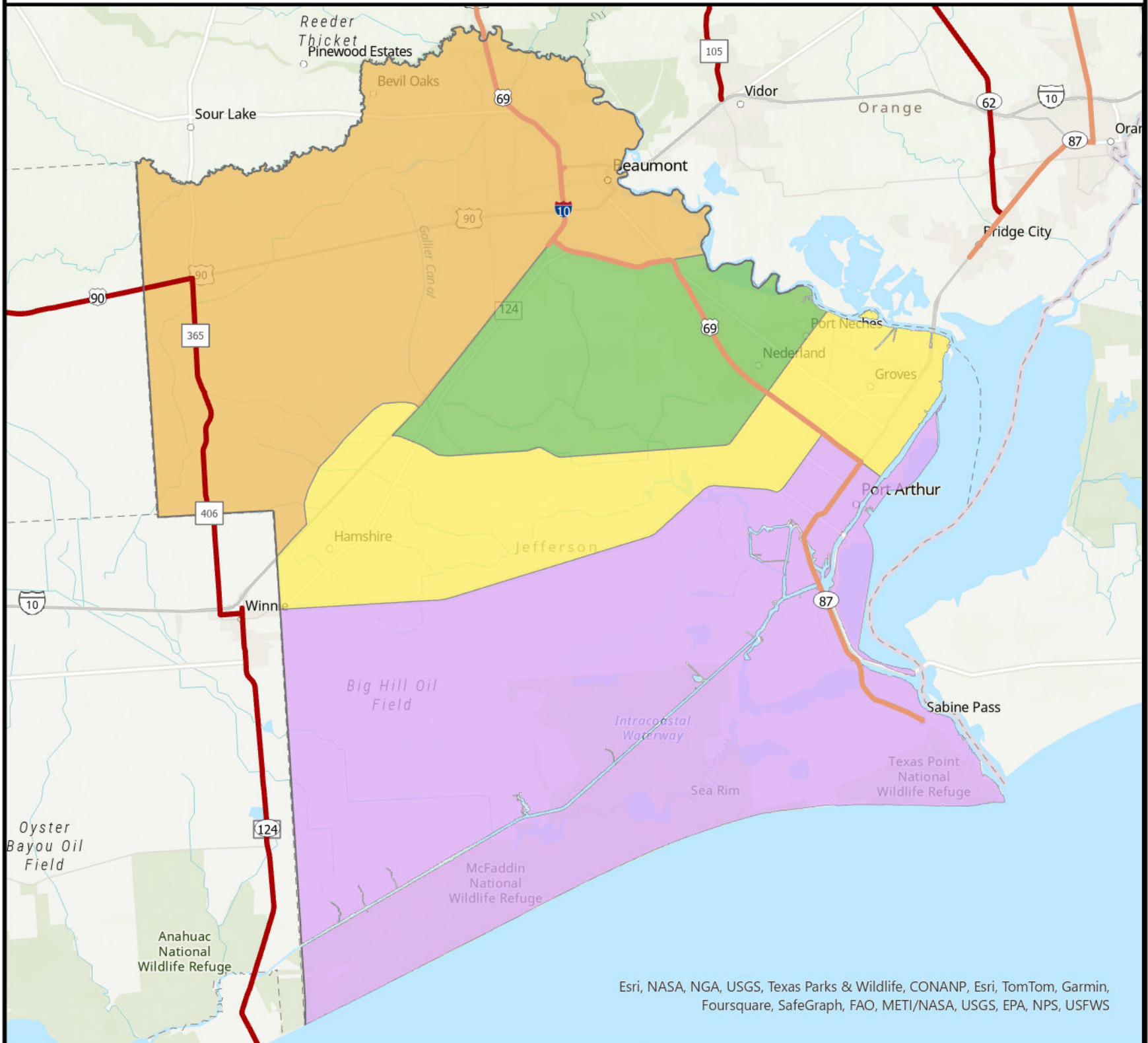
Note: All population, household, and vehicle estimates are based on 2021 Landscan USA 3 arc-second (90m) nighttime population estimates and American Community Survey 2022 five-year estimates to determine population per household and vehicles per household at block group level. (<http://landscan.ornl.gov/about>)



Zone	Population	Households	Vehicles	Hotel Capacity	Hotel Vehicles	MH Pop	MH Vehicles
Out of Zone	35355	14490	26200	634	663	10778	7976



# Jefferson County Evacuation Zones



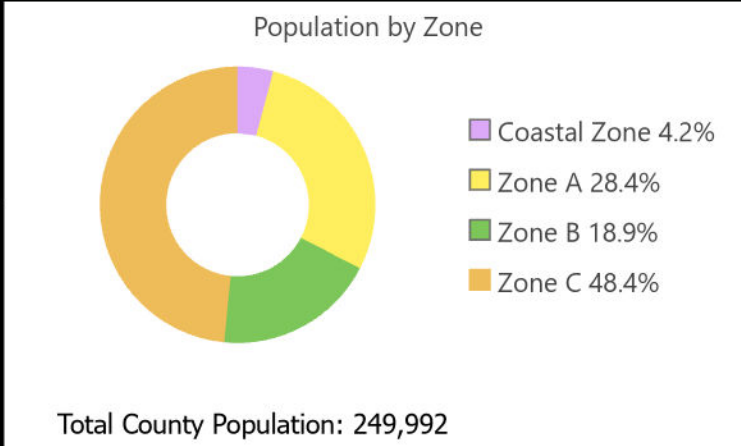
Esri, NASA, NGA, USGS, Texas Parks & Wildlife, CONANP, Esri, TomTom, Garmin, Foursquare, SafeGraph, FAO, METI/NASA, USGS, EPA, NPS, USFWS

- TXDOT Evacuation Routes**
- Major Evacuation Routes
  - Potential EvacuLanes
  - Coastal Zone
  - Zone A
  - Zone B
  - Zone C

Note: All population, household, and vehicle estimates are based on 2021 Landscan USA 3 arc-second (90m) nighttime population estimates and American Community Survey 2022 five-year estimates to determine population per household and vehicles per household at block group level. (<http://landscan.ornl.gov/about>)



Scale: 1:350,000

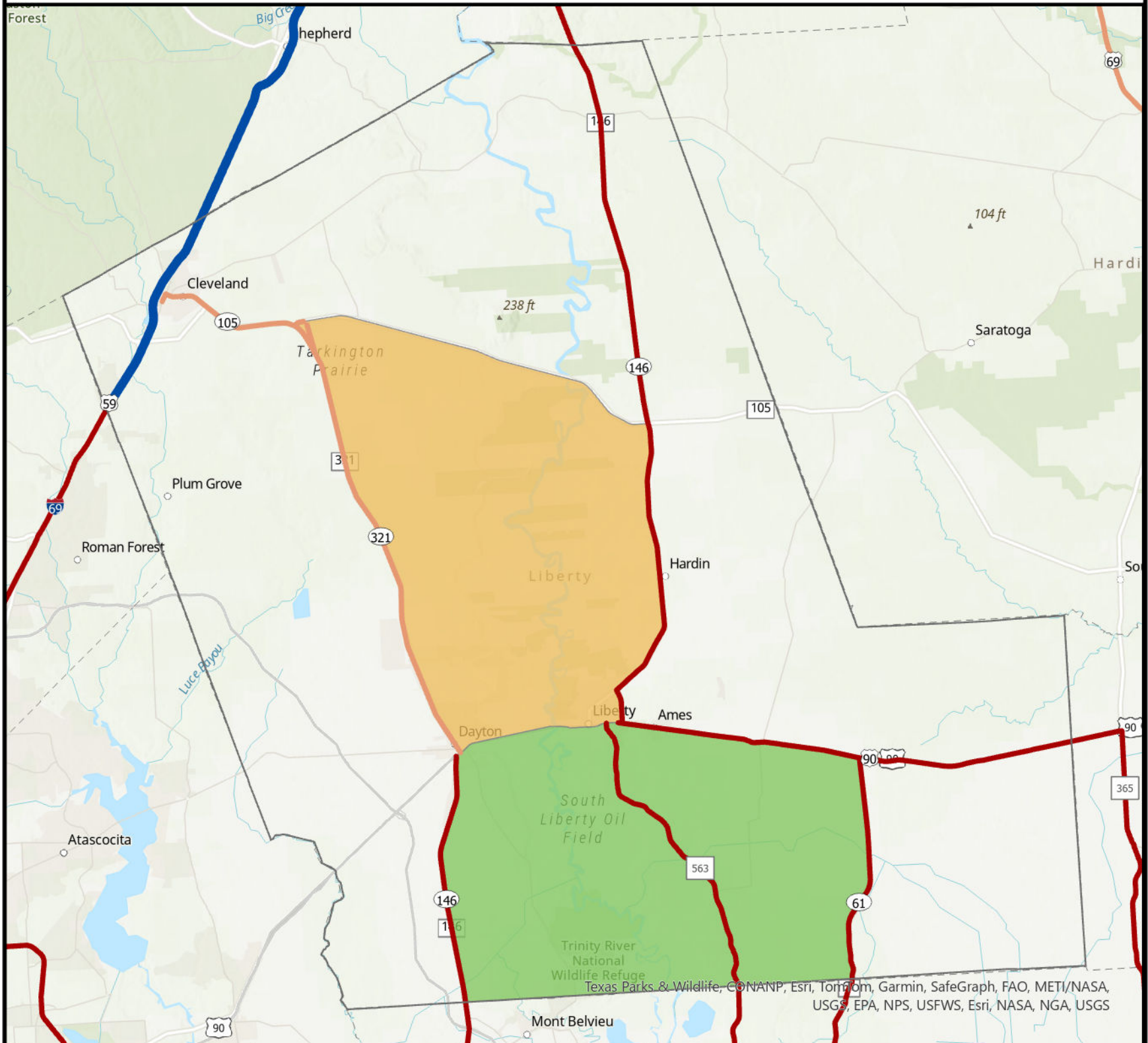


Zone	Population	Households	Vehicles	Hotel Capacity	Hotel Vehicles	MH Pop	MH Vehicles
Coastal Zone	10442	4213	6304	58	58	346	213
Zone A	71084	25999	46331	1685	1686	2357	1573
Zone B	47347	14159	26497	1397	1397	1577	902
Zone C	121119	48955	82521	2776	2776	4028	2790

**Coastal Zone:** All areas south of SH 73 from western county boundary to US 69 (Memorial Blvd).  
**Zone A:** All areas south of IH 10 to FM 365, south and east of FM 365 to Neches River. Also, areas north of IH 10 near the Fannett and Hamshire communities.  
**Zone B:** All areas south of IH 10 to US 69, south of US 69 to Neches River.  
**Zone C:** All remaining areas in Jefferson County.

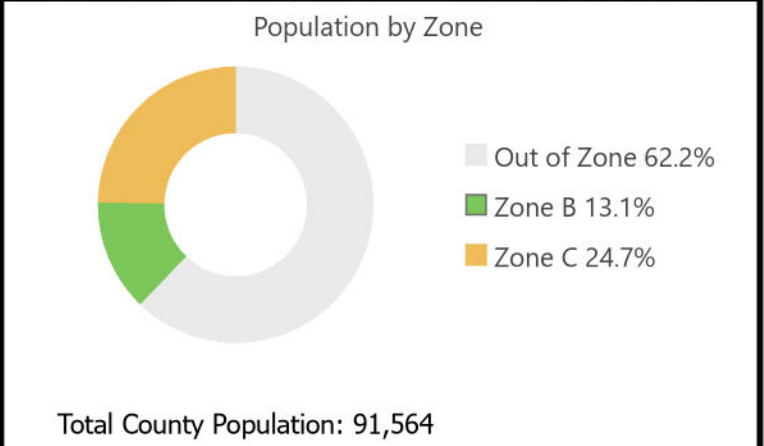
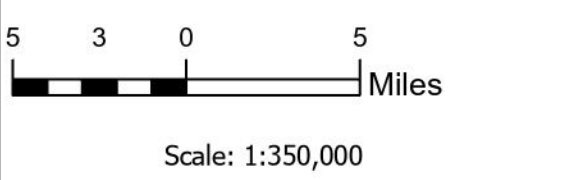


# Liberty County Evacuation Zones



- TXDOT Evacuation Routes**
- Major Evacuation Routes
  - Potential Contraflow
  - Potential EvacuLanes
  - Zone B
  - Zone C
  - Out of Zone

Note: All population, household, and vehicle estimates are based on 2021 Landscan USA 3 arc-second (90m) nighttime population estimates and American Community Survey 2022 five-year estimates to determine population per household and vehicles per household at block group level. (<http://landscan.ornl.gov/about>)

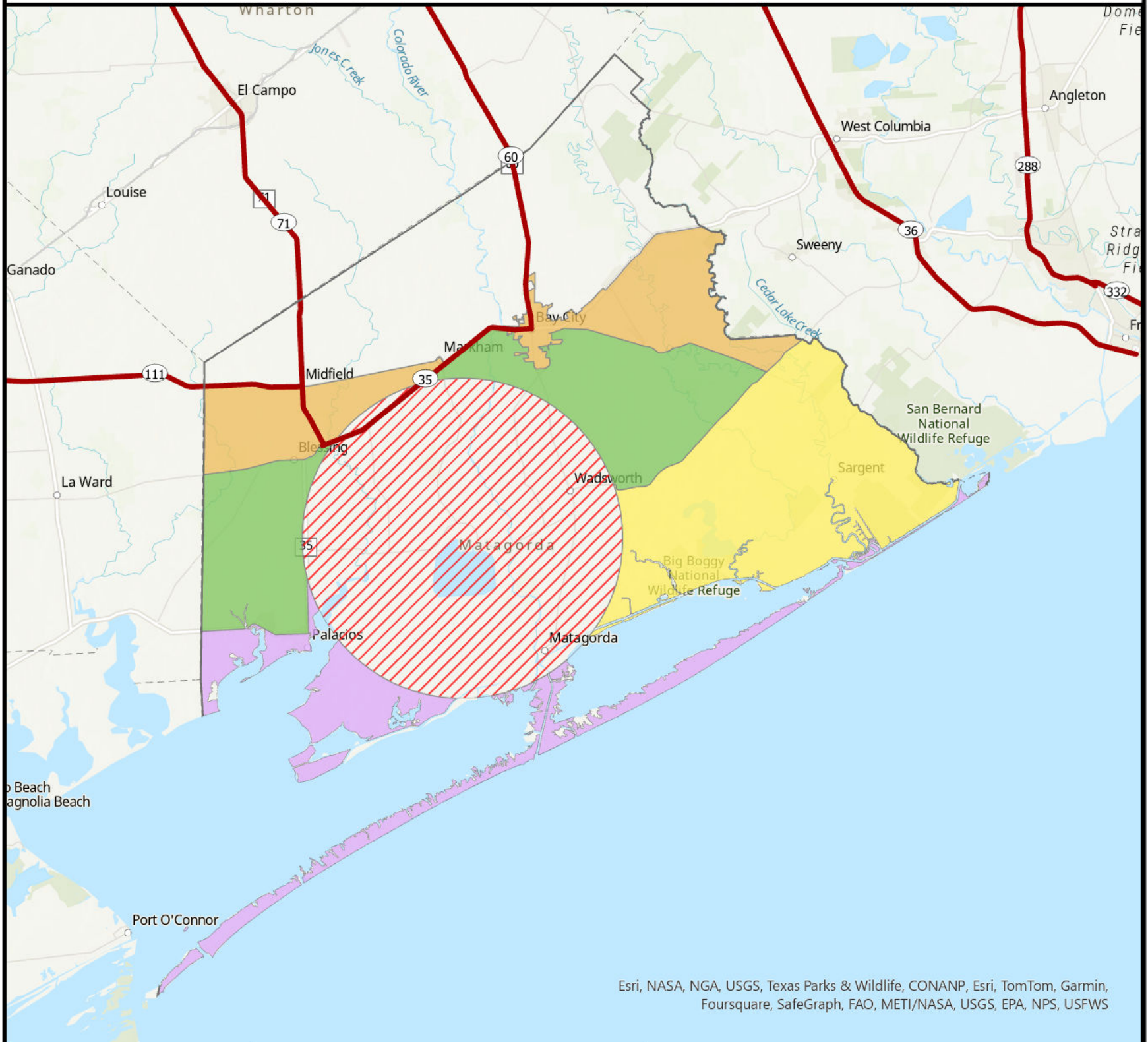


Zone	Population	Households	Vehicles	Hotel Capacity	Hotel Vehicles	MH Pop	MH Vehicles
Out of Zone	56927	17826	35740	408	408	18708	11737
Zone B	11985	4114	8412	86	86	3944	2762
Zone C	22652	8231	15969	123	123	7452	5254

**Zone B:** All areas south of US 90 from SH 146 to SH 61.  
**Zone C:** All areas south of SH 105 from SH 321 east to SH 146.



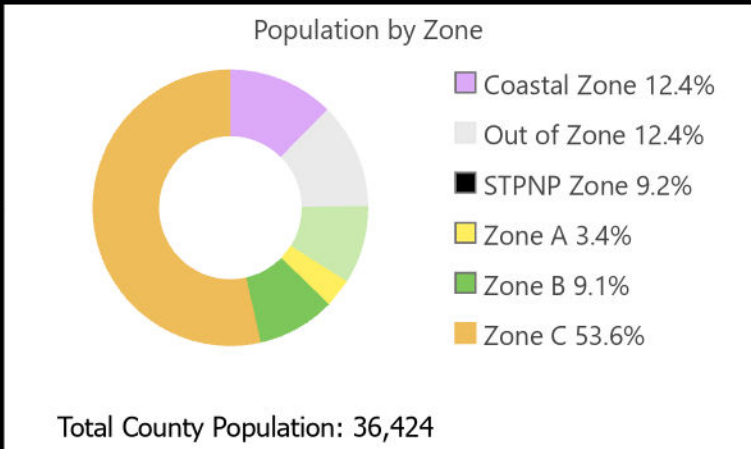
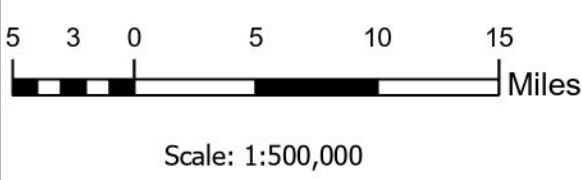
# Matagorda County Evacuation Zones



Esri, NASA, NGA, USGS, Texas Parks & Wildlife, CONANP, Esri, TomTom, Garmin, Foursquare, SafeGraph, FAO, METI/NASA, USGS, EPA, NPS, USFWS

- TXDOT Evacuation Routes**
- Major Evacuation Routes
  - Coastal Zone
  - Zone A
  - Zone B
  - Zone C
  - STPNP Zone
  - Out of Zone

Note: All population, household, and vehicle estimates are based on 2021 Landscan USA 3 arc-second (90m) nighttime population estimates and American Community Survey 2022 five-year estimates to determine population per household and vehicles per household at block group level. (<http://landscan.ornl.gov/about>)

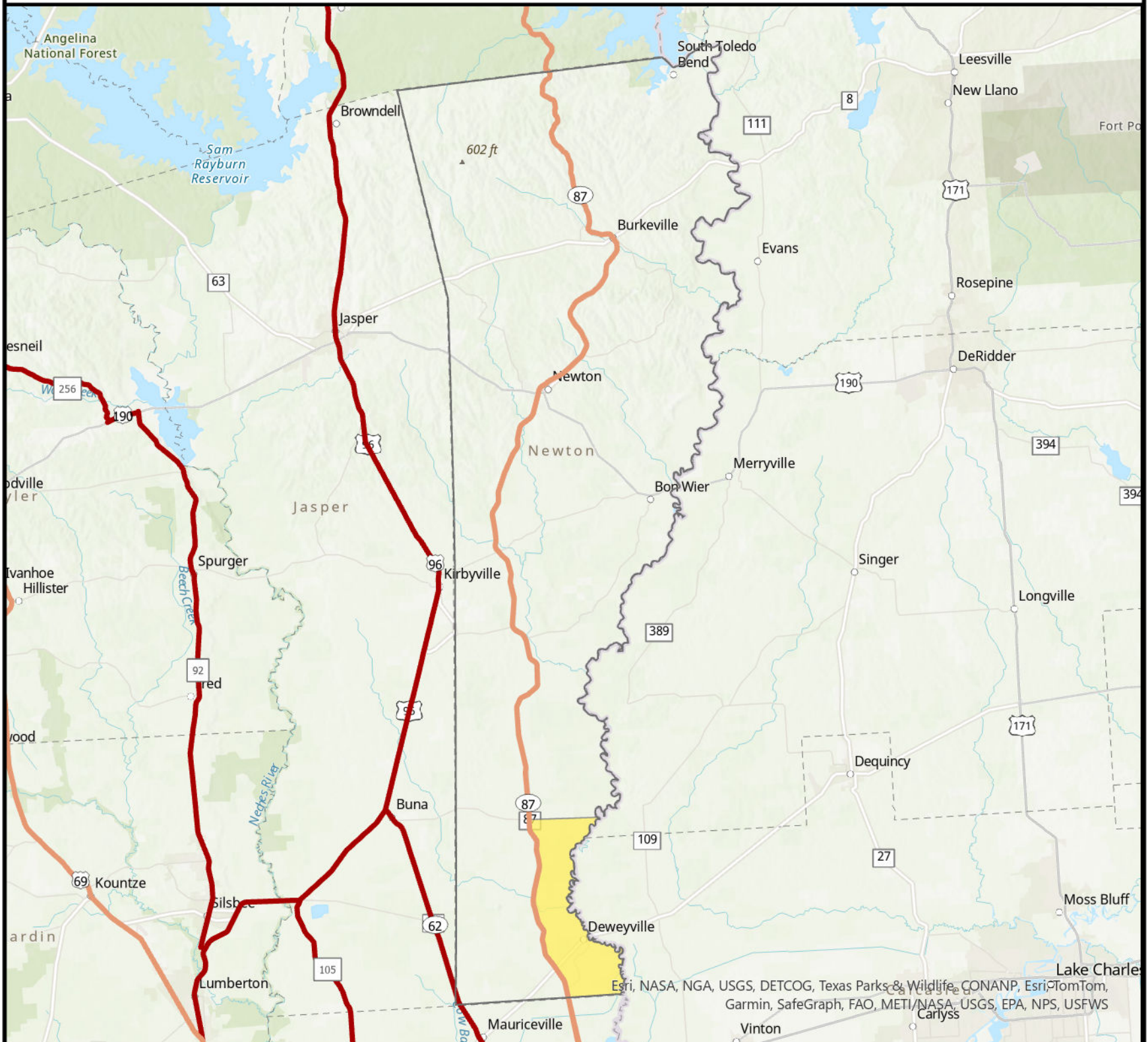


Zone	Population	Households	Vehicles	Hotel Capacity	Hotel Vehicles	MH Pop	MH Vehicles
Coastal Zone	4529	1827	3374	56	73	549	413
Out of Zone	4504	1629	3462	167	169	541	414
STPNP Zone	3333	1570	3187	137	149	394	383
Zone A	1229	526	915	44	62	140	110
Zone B	3323	1546	3000	29	30	399	364

**Coastal Zone:** All areas south and east of SH 35 to Harrison Rd. Also, all areas south of STPNP to Matagorda, including all barrier islands.  
**STPNP Zone:** All area within 10 miles of South Texas Project Nuclear Plant.  
**Zone A:** All areas south of FM 521 from STPNP to eastern county boundary.  
**Zone B:** All areas south of FM 616 to SH 35, south of SH 35 to Bay City, and south of FM 357, excluding Bay City limits.  
**Zone C:** All areas within Bay City limits. Also, all areas south of SH 35.

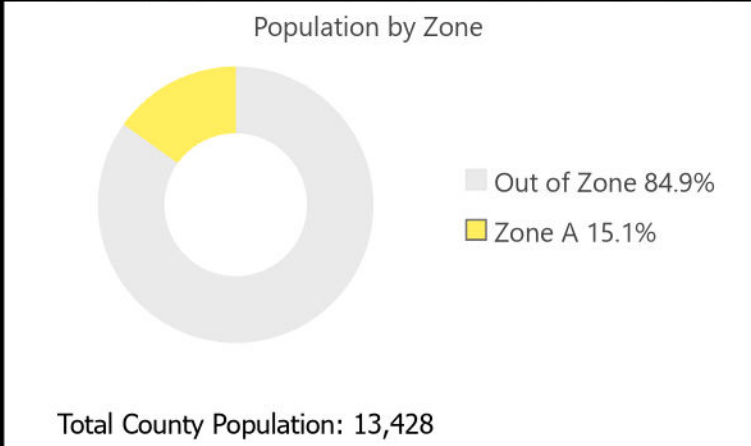
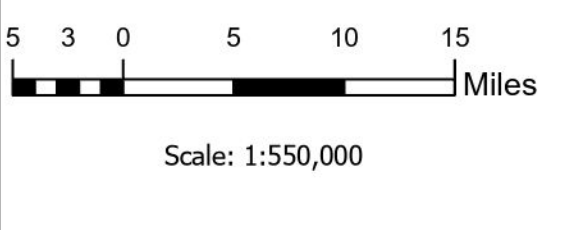


# Newton County Evacuation Zones



- TXDOT Evacuation Routes**
- Major Evacuation Routes
  - Potential EvacuLanes
  - Zone A
  - Out of Zone

Note: All population, household, and vehicle estimates are based on 2021 Landscan USA 3 arc-second (90m) nighttime population estimates and American Community Survey 2022 five-year estimates to determine population per household and vehicles per household at block group level. (<http://landscan.ornl.gov/about>)

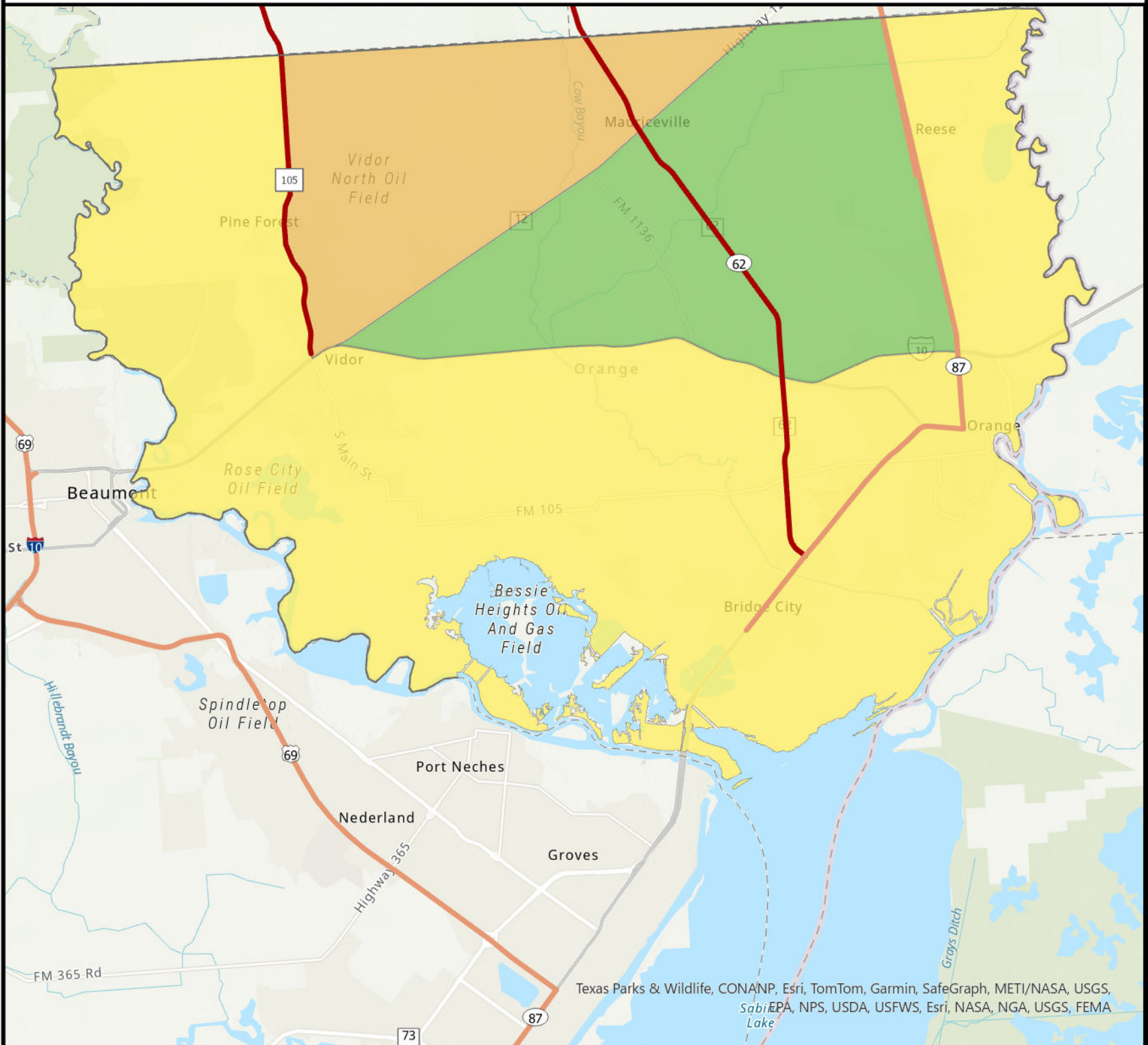


Zone	Population	Households	Vehicles	Hotel Capacity	Hotel Vehicles	MH Pop	MH Vehicles
Out of Zone	11398	4615	8062	74	76	4207	2958
Zone A	2030	791	1567	0		744	579

**Out of Zone:** All areas east of SH 87 and south of FM 253 to the Sabine River.  
**Zone A:** All areas east of SH 87 and south of FM 253 to the Sabine River.

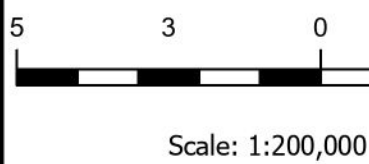


# Orange County Evacuation Zones

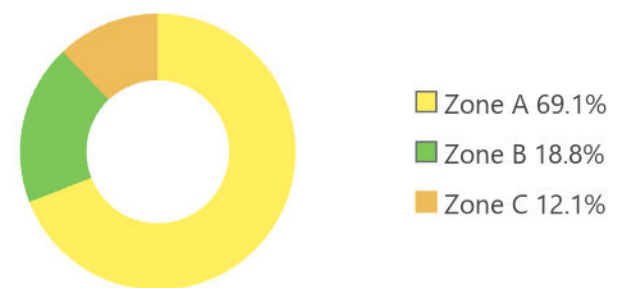


- TXDOT Evacuation Routes**
- Major Evacuation Routes
  - Potential EvacuLanes
  - Zone A
  - Zone B
  - Zone C

Note: All population, household, and vehicle estimates are based on 2021 Landscan USA 3 arc-second (90m) nighttime population estimates and American Community Survey 2022 five-year estimates to determine population per household and vehicles per household at block group level. (<http://landscan.ornl.gov/about>)



Population by Zone



Total County Population: 82,865

Zone	Population	Households	Vehicles	Hotel Capacity	Hotel Vehicles	MH Pop	MH Vehicles
Zone A	57235	22563	41005	516	516	9865	7051
Zone B	15606	5683	12512	387	387	2676	2161
Zone C	10024	3737	7949	0		1718	1359

**Zone A:** All areas south of IH 10. Also, area north of IH 10 from the Neches River to N Main St, and area east of SH 87 to Sabine River.

**Zone B:** All areas south of SH 12.

**Zone C:** All remaining areas in Orange County.